

सूचनाको हक सम्बन्धी ऐन, २०६४ को दफा ५ (३) बमोजिम तयार गरिएको  
सूचनाको विवरण  
(२०७९, वैशाख १ देखी असार मसान्तसम्म)



प्रदेश सरकार  
स्वास्थ्य तथा जनसंख्या मन्त्रालय  
प्रदेश स्वास्थ्य आपूर्ति व्यवस्थापन केन्द्र  
गण्डकी प्रदेश

## विषय-सूची

१. निकायको स्वरूप र प्रकृति.....	1
२. निकायको काम, कर्तव्य र अधिकार.....	2
३. निकायमा रहने कर्मचारी संख्या र कार्य विवरण:.....	3
४. प्रदेश स्वास्थ्य आपूर्ति व्यवस्थापन केन्द्रबाट प्रदान गरिने प्रमुख सेवाहरू.....	5
५. सेवा प्रदान गर्ने महाशाखा शाखा र जिम्मेवार कर्मचारि.....	6
६. सेवा प्राप्त गर्न लाग्ने दस्तुर र अवधि.....	6
७. निर्णय गर्ने प्रक्रिया र अधिकारी:.....	7
८ . निर्णय उपर उजूरी सुन्ने अधिकारी.....	7
९. सम्पादन गरेको कामको विवरण.....	8
११. ऐन, नियम तथा निर्देशिकाको सूची.....	10
१२. आम्दानी, खर्च तथा आर्थिक कारोबार सम्बन्धी अघावधिक विवरण.....	11
१३. तोकिए बमोजिम अन्य विवरण.....	11

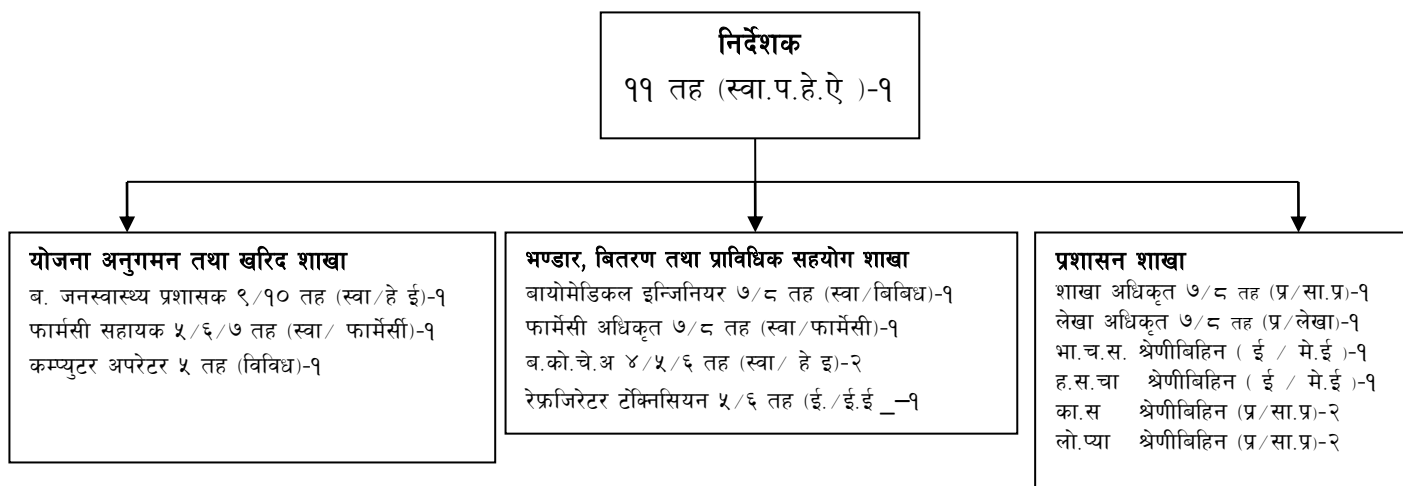
### अनुसूचीहरू

१ कोभिड-१९ भ्याक्सिन तथा अन्य खोप एवं खोप सामग्रीको आपूर्ति व्यवस्थापन.....	१२
२. बायोमेडिकल उपकरण मर्मत सम्भार एवं जडान कार्यमा प्राविधिक सहयोग तथा सुपरिवेक्षण.....	१४
३ औषधि तथा औषधिजन्य सामग्री एवं खोप आपूर्ति व्यवस्थापन कार्यको नियमित अनुगमन एवं सुपरीवेक्षण.....	१५
४. अत्यावश्यक औषधि तथा औषधिजन्य सामग्री एवं बायोमेडिकल औजार उपकरण वितरण विवरण.....	१६
५. आधारभूत आपूर्ति व्यवस्थापन तालिम कार्यक्रममा प्राविधिक सहजीकरण.....	२६
६ Birthing centre हरुमा oxytocin भण्डारण सम्बन्धी कार्यमा अनुगमन तथा सुपरिवेक्षण .....	२७
७ Nick Simons Institute सँग सम्झौता.....	२८
८ आम्दानी, खर्च तथा आर्थिक कारोबार सम्बन्धी अघावधिक विवरण.....	२९

## १। निकायको स्वरूप र प्रकृति

नेपालको संविधानले आधारभूत स्वास्थ्य सेवालाई प्रत्येक नागरिकको मौलिक हकको रूपमा स्थापित गरेको छ । देशको केन्द्रीय तहमा स्वास्थ्य तथा जनसङ्ख्या मन्त्रालयले गुणस्तरीय स्वास्थ्य सेवालाई सबै नागरिकको सर्वसुलभ पहुँचमा पुर्याउने प्रणालीलाई आधार बनाई राष्ट्रिय स्वास्थ्य नीति २०७६ तर्जुमा गरी लागु गरेको छ । विगतमा आधारभूत स्वास्थ्य सेवा प्रवाहमा आवश्यक स्वास्थ्य सामग्री एवं उपकरणको परिमाण निर्धारण गर्नु, खरिद गर्नु, भण्डारण गर्नु एवं स्वास्थ्य कार्यालय, अस्पताल साथै स्वास्थ्य संस्थाहरूमा वितरण गर्ने काम स्वास्थ्य सेवा विभागबाट हुँदै आएको थियो । नेपालको संविधान २०७२ अनुसार देशमा सङ्घीय शासन प्रणाली लागु भए पश्चात् प्रदेश तहमा स्वास्थ्य आपूर्ति व्यवस्थापनको प्रमुख जिम्मेवारी प्रदेश स्वास्थ्य आपूर्ति व्यवस्थापन केन्द्रलाई दिइएको अवस्था छ । सोही अनुरूप सामाजिक विकास मन्त्रालय मातहत रहने गरी २०७६ सालदेखि प्रदेश स्वास्थ्य आपूर्ति व्यवस्थापन केन्द्र, गण्डकी प्रदेशको पोखरामा कार्यालय स्थापना भई सेवा सञ्चालन गर्दै आईरहेकोमा मिति २०७८ साल जेठ ५ गतेको कार्याविभाजन अनुसार यो कार्यालय स्वास्थ्य तथा जनसङ्ख्या मन्त्रालय मातहत रहेने गरी सञ्चालनमा रहेको छ ।

### प्रदेश स्वास्थ्य आपूर्ति व्यवस्थापन केन्द्रको संगठन संरचना



## २. निकायको काम, कर्तव्य र अधिकार

प्रदेश स्वास्थ्य आपूर्ति व्यवस्थापन केन्द्रका उद्देश्यहरू निम्नानुसार रहेका छन् ।

- प्रदेश स्तरमा आपूर्ति शृङ्खला व्यवस्थापन कार्यका लागि आवश्यक योजना तर्जुमा, खरिद, भण्डारण, वितरण, पुनरावलोकन, मूल्याङ्कन र समन्वय आदि कार्य गर्ने ।
- आपूर्ति शृङ्खला व्यवस्थापन प्रणालीमा रहेका कमी कमजोरी पहिचान गरी, समस्या एवं चुनौतीको समाधानका लागि सरोकारवाला निकायहरबिच आवश्यक समन्वय गर्ने ।
- प्रदेश र जिल्ला तहको आपूर्ति शृङ्खला व्यवस्थापन सम्बन्धी कार्यको क्षमता विस्तार गर्नुका साथै स्वास्थ्य सामग्री आपूर्ति व्यवस्थापन सूचना प्रणालीको उचित व्यवस्थापन, स्वास्थ्य सामग्रीको प्रक्षेपण तथा परिमाण निर्धारण जस्ता कार्यहरू सञ्चालन गर्ने ।

साथै प्रदेश स्वास्थ्य आपूर्ति व्यवस्थापन केन्द्रको जिम्मेवारी निम्न अनुसारको कार्यहरू सञ्चालन गर्ने/गराउने रहेको छन् ।

- आपूर्ति शृङ्खला व्यवस्थापन सम्बन्धमा भएका सुधारका कार्य तथा प्रदेश स्तरमा अत्यावश्यक औषधीहरू एवं सबै किसिमका स्वास्थ्य सामग्री प्रवाहको पुनरावलोकन एवं आवश्यक प्रक्षेपण तथा सिफारिस गर्न चौमासिक तथा वार्षिक समीक्षा बैठकको आयोजना गर्ने,
- आपूर्ति शृङ्खला व्यवस्थापनसँग सम्बन्धीत वार्षिक योजना, योजना तर्जुमा गर्नुका साथै अत्यावश्यक औषधीहरू एवं सबै किसिमका स्वास्थ्य सामग्रीहरूको खरिद, भण्डारण, वितरण र ढुवानीको चुस्त-दुरुस्त र प्रभावकारी प्रबन्ध मिलाउने,
- आवश्यकता अनुसार विद्युतीय आपूर्ति शृङ्खला व्यवस्थापन सूचना प्रणालीलाई पुनरावलोकन गरी अद्यावधिक गर्ने तथा आपूर्ति शृङ्खला व्यवस्थापन प्रणालीमा आइपर्ने गम्भीर समस्या जस्तै सामग्रीको शून्य मौज्दात, अत्यधिक मौज्दात, वितरणमा असन्तुलन हुन नदिन आवश्यक कार्य गर्ने,
- आपूर्ति शृङ्खला व्यवस्थापनका विविध पक्षमा प्राविधिक दक्षता वृद्धि गर्न सम्बन्धित निर्देशिका वा मापदण्ड अनुसार कर्मचारीको कार्यविवरण, कार्य मापदण्ड एवं स्तरीकरण, संस्थागत तालिम, अनसाइट कोचिङ्ग मेन्टरिङ्ग लगायत प्राविधिक विशेषज्ञता प्रदान गर्ने,
- आपूर्ति शृङ्खला व्यवस्थापनका लागि आवश्यक जनशक्ति विकासका साथै कार्यस्थलमा सिकाई अभ्यासका निम्ति सहयोग गर्नुका साथै आपूर्ति शृङ्खलालाई समय सापेक्ष बनाउन आवश्यक पर्ने जनशक्ति एवं सो को निरन्तर विकास, आवश्यक ज्ञान, सीप र दक्षताको पहिचान गरी प्रतिस्पर्धी र क्षमतायुक्त बनाउने,
- अत्यावश्यक औषधीहरू एवं स्वास्थ्य सामग्रीहरूको आपूर्ति शृङ्खला सुधारका लागि सरोकारवालाहरूको चासोका सम्बन्धमा वकालत गर्नुका साथै विकास साझेदारहरूसँग आपसी सहयोग र समन्वय गर्ने,

- आपूर्ति शृङ्खला व्यवस्थापनमा सुधार ल्याउनाका लागि नवीनतम कार्यको पहिचान र अवलम्बन गर्नु/गराउनुका साथै कुशल अभ्यास एवं प्रक्रिया बसाउन सहकार्य गर्ने,
- आपूर्ति शृङ्खलासँग जोडिएका सफलताका कथा, सिकाई उपलब्धिहरू पहिचान गरी व्यवहारमा लागू गर्ने, र आपूर्ति शृङ्खला व्यवस्थापनमा भएका कमी कमजोरीहरूको लेखाजोखा एवं मूल्याङ्कन गरी सुधारका लागि आवश्यक कार्य गर्नुका साथै सम्बन्धित नीति, रणनीति एवं निर्देशिकाको पुनरावलोकन गरी सुधारका लागि आवश्यक कार्य गर्ने ।

### ३. निकायमा रहने कर्मचारी संख्या र कार्य विवरण:

#### निकायमा रहेका कर्मचारीको विवरण

क्र स	पद	नाम	श्रेणी/तह	दरबन्दी	सेवा	समुह	पदपूर्ति	
							स्थायी	करार सेवा
१	निर्देशक	रोशन न्यौपाने	११	१	स्वास्थ्य	हे.इ	१	०
२	फार्मसी अधिकृत	सुस्मिता शर्मा	७/८	१	स्वास्थ्य	फार्मसी	१	०
३	लेखा अधिकृत	इन्द्र कमल सिग्देल	७/८	१	प्रशासन	लेखा	१	०
४	बायोमेडिकल इन्जिनियर	सुसन्जित विजय कोइराला	७/८	१	स्वास्थ्य	विविध	०	१
५	ब.को.चे.अ	नवराज विष्ट	४/५/६	१	स्वास्थ्य	हे.इ	१	०
६	ब.को.चे.अ	हिमलाल सुवेदी	४/५/६	१	स्वास्थ्य	हे.इ	१	०
७	नायब सुब्बा	जगत पौडेल	५	०	प्रशासन	सा.प्र	१	०
८	फार्मसी सहायक	निरज तिमिसना	५/६/७	१	स्वास्थ्य	फार्मसी	१	०
९	बायोमेडिकल टेक्निसियन	सृष्टि ओलिया	५/६/७	०	स्वास्थ्य	विविध	१	०
१०	कम्प्युटर अपरेटर	अनिता आचार्य	५	१		विविध	०	१
११	रेफ्रिजरेटर टेक्निसियन		५/६	१	इन्जिनियरिङ	ई.इ	०	०
१२	ह.स.च	सोम सि मगर	श्रेणीविहीन	१	इन्जिनियरिङ	मे.ई	०	१
१३	भा.च.स.	रोम बहादुर खड्का	श्रेणीविहीन	१	इन्जिनियरिङ	मे.ई	०	१
१४	का.स	धरम ब बोहरा	श्रेणीविहीन	१	प्रशासन	सा.प्र	१	०
१५	का.स	रमेश प्र अधिकारी	श्रेणीविहीन	१	प्रशासन	सा.प्र	०	१
१६	लो.प्या	शकर पुरी	श्रेणीविहीन	१	प्रशासन	सा.प्र	०	१
१७	लो.प्या	गिरमान बहादुर कार्की	श्रेणीविहीन	१	प्रशासन	सा.प्र	०	१
	<b>जम्मा</b>			<b>१७</b>			<b>११</b>	<b>७</b>
<b>अन्य कर्मचारी</b>								
१	मदन कुमार प्रजापति	फिल्ड सपोर्ट अफिसर, USAID-PSM						
२	सुनिल नेपाल	फार्मशिष्ट , UNICEF						
३	मिलु त्रिपाठि	फार्मशिष्ट , Save the children						

## कार्यविवरण

### योजना अनुगमन तथा खरिद शाखाको जिम्मेवारी

औषधीजन्य मालसामान वा उपकरणको खरिद कार्यको लागि प्रदेश स्वास्थ्य आपूर्ति व्यवस्थापन केन्द्रमा योजना अनुगमन तथा खरिद शाखा रहेको छ । योजना अनुगमन तथा खरिद शाखाको जिम्मेवारी निम्न अनुसार रहेका छन् ।

- खरिद सम्बन्धी कार्यहरू जस्तै वार्षिक खरिद योजना तयार गर्ने, खरिद गुरुयोजना तयार गर्ने, समन्वय गर्ने, खरिद माग संकलन गरी स्वीकृतिको लागि केन्द्रका निर्देशक समक्ष पेस गर्ने,
- बोलपत्र सम्बन्धी कागजात तयार गर्ने, बोलपत्रको प्रक्रिया सञ्चालन गर्ने, सूचना प्रकाशन गर्ने, बोलपत्र सुरक्षित गर्ने, पूर्वयोग्यता तोक्ने, खरिद समय तालिका तयार गर्ने,
- बोलपत्र परीक्षण र मूल्याङ्कन प्रतिवेदन तयार गर्न समितिको गठन गर्ने, स्वीकृतिको लागि पेस गर्ने,
- खरिद आदेश तथा खरिद सम्झौता व्यवस्थापन गर्ने, र
- आपूर्ति पूर्वगुणस्तर सुनिश्चित गर्ने, सामान आपूर्ति आदेश गर्ने, स्टोर दाखिला प्रतिवेदन हाँसिल गर्ने, भुक्तानीको लागि सिफारिस गर्ने तथा म्याद थप, कार्य सम्पादन र जमानतको अभिलेख राख्ने आदि ।

### भण्डार, वितरण तथा प्राविधिक सहयोग शाखाको जिम्मेवारी

#### भण्डार तथा वितरण

- खरिद गरिने औषधीजन्य सामग्री तथा उपकरणको परिमाण प्रक्षेपण र निर्धारण गर्ने,
- खरिद भई आएका औषधीजन्य सामग्री तथा उपकरणहरू नियमानुसार भ(eLMIS मार्फत स्टोर दाखिला गर्ने, आवश्यकता अनुसार प्र.स्वा.आ.व्य.के.बाट प्रदेश अन्तर्गतका स्वास्थ्य कार्यालयहरू तथा अस्पतालहरूमा औषधीजन्य सामग्री तथा उपकरणहरू हस्तान्तरण गर्ने र सो को अभिलेख राख्ने, अधिकतम मौज्जात स्तर (ASL) र आकस्मिक माग बिन्दु (EOP) अनुसार औषधीजन्य सामग्री तथा उपकरणको भण्डारण गर्ने, र त्रैमासिक रूपमा भौतिक मौज्जात गणना गरी प्रतिवेदन गर्ने, केन्द्रमा आउँदै गरेका औषधीजन्य सामग्री तथा उपकरणहरूको परिमाण अनुगमन गर्ने, जगेडा मौज्जात राख्ने तथा सामग्रीको अटुट उपलब्धता सुनिश्चित गर्ने ।

#### प्राविधिक सहयोग

- खरिद गरिने औषधीजन्य सामग्री तथा उपकरणहरूको गुणस्तर सुनिश्चितता गर्न प्राविधिक विवरण(स्पेसिफिकेशन) तयार गर्ने,
- प्राविधिक विवरण (स्पेसिफिकेशन) बैंक तयार गर्ने,
- बोलपत्रको प्राविधिक परीक्षण गर्ने, परीक्षणका क्रममा कुनै कुरा बुझ्न आवश्यक ठानेमा बोलपत्रदातालाई लिखित पत्रबाट ईमेल मार्फत सोधपुछ गर्ने,
- खरिद भई आएका औषधीजन्य सामग्री तथा उपकरणहरू तोकिएको प्राविधिक स्पेसिफिकेशन बमोजिम भए नभएको निरीक्षण गरी प्रतिवेदन गर्ने,

- संस्थागत रूपमा बायोमेडिकल उपकरणहरूको प्रोफाइल तयार गर्ने, र बायोमेडिकल उपकरणहरूको आवश्यकता अनुसार मर्मत सम्भार गर्ने आदि ।

#### प्रशासन शाखाको जिम्मेवारी

##### प्रशासन

- प्रदेश स्वास्थ्य आपूर्ति व्यवस्थापन केन्द्रका कर्मचारीहरूको हाजिर तथा विदा व्यवस्थापन सम्बन्धी कार्य गर्ने,
- केन्द्रका कर्मचारीहरूको व्यक्तिगत विवरण अध्यावधिक गर्ने, पत्र दर्ता, चलानी सम्बन्धी कार्य गर्ने,
- केन्द्रको भवनको सुरक्षा, सरसफाई, बत्ति, पानी तथा टेलिफोनको प्रबन्ध लगायत आन्तरिक प्रशासन सम्बन्धी अन्य कार्य गर्ने, र केन्द्रका कामका सिलसिलामा आईपर्ने अन्य प्रशासनिक कार्यहरू गर्ने ।

##### लेखा

- खरिद गुरुयोजना र वार्षिक खरिद योजना तयार गर्न सहयोग गर्ने,
- वार्षिक खरिद योजना तयार गर्न सहयोग गर्ने तथा प्र.स्वा.आ.व्य.के.का निर्देशकबाट स्वीकृतिका लागि पेस गर्ने,
- औषधीजन्य मालसामान वा उपकरणको विवरण, सोको लागत अनुमान, खरिदको प्याकेज, बोलपत्रसम्बन्धी कागजातको तयारी र स्वीकृतिका लागि पेस गर्ने, खरिद प्रक्रियाको समयतालिका, खरिद विधि, माध्यम आदि सार्वजनिक खरिद अनुगमन कार्यालयको ढाँचा बमोजिम तयार गर्न सहयोग गर्ने, भू(द्यष्म दाखिला भएको अवस्थामा प्रक्रियाअनुसार बोलपत्र खोली सो को मुचुल्का सम्बन्धीत बोलपत्रदाता वा प्रतिनिधिलाई ईमेल मार्फत उपलब्ध गराउने,
- म्याद थप, कार्य सम्पादन र जमानतको अभिलेख राख्ने, र सामान आपूर्ति भई स्टोर दाखिला प्रतिवेदन र रकम भुक्तानीको लागि सिफारिस प्राप्त भएपछि नियमानुसार भुक्तानी दिने ।

## ४. प्रदेश स्वास्थ्य आपूर्ति व्यवस्थापन केन्द्रबाट प्रदान गरिने प्रमुख सेवाहरू

#### योजना अनुगमन तथा खरिद शाखा

- खरिद गुरुयोजना, वार्षिक खरिद योजना र बोलपत्र आव्हान सम्बन्धी सूचना बारे जानकारी
- बोलपत्र बिक्री
- बोलपत्र पूर्व बैठक बारे जानकारी
- बोलपत्र परीक्षण तथा मुल्याङ्कन बारे जानकारी
- आशय पत्र, बोलपत्र स्वीकृतीको सूचना एवं खरिद सम्झौता बारे जानकारी

#### भण्डार, वितरण तथा प्राविधिक सहयोग शाखा

- विभिन्न प्रकारका खोप तथा खोप सामग्रीहरूको मापदण्ड बमोजिम भण्डार एवं वितरण

- विभिन्न प्रकारका औषधी तथा मेडिकल उपकरणहरूको मापदण्ड वमोजिम भण्डार एवं वितरण
- प्राविधिक स्पेसिफिकेशन तयार गर्ने
- बायोमेडिकल उपकरणहरूको मर्मत गर्न आवश्यकता अनुसार जाँच- बुझ
- बायोमेडिकल उपकरणहरूको आवश्यकता अनुसार मर्मत
- प्रदेश अन्तर्गतका स्वास्थ्य संस्थाहरूमा आपूर्ति व्यवस्थापन सम्बन्धी अनुगमन

#### प्रशासन

- बोलपत्रको भुक्तानी र आर्थिक प्रशासन सम्बन्धी सम्पूर्ण कार्यहरू
- गुनासो व्यवस्थापन
- सोधपुछ तथा सहायता

### ५. सेवा प्रदान गर्ने महाशाखा शाखा र जिम्मेवार कर्मचारि

योजना अनुगमन तथा खरिद शाखा

- निरज तिमिसिना , फार्मसी सहायक

भण्डार, वितरण तथा प्राविधिक सहयोग शाखा

- सुष्मिता शर्मा, ब फार्मसी अधिकृत

करमचारी प्रशासन

- जगत पौडेल, नायब सुब्बा

आर्थिक प्रशासन

- इन्द्रकमल सिग्देल, लेखा अधिकृत

### ६. सेवा प्राप्त गर्न लाग्ने दस्तुर र अवधि

क्र.स	शाखाहरु	प्रदान गरिने सेवा र कार्य विवरण	सेवा उपलब्ध हुने प्रक्रिया	सेवामा लाग्ने दस्तुर	सेवा प्राप्त गर्न लाग्ने समय
१	योजना अनुगमन तथा खरिद शाखा	खरिद गुरुयोजना, वार्षिक खरिद योजना र बोलपत्र आव्हान सम्बन्धी सूचना बारे जानकारी	कार्यालयको वेबसाइट <a href="http://phsmc.gandaki.gov.np">phsmc.gandaki.gov.np</a> बाट	निःशुल्क	तुरुन्त
		बोलपत्र विक्री	तोकिएको दस्तुर राष्ट्रिय बणिज्य बैंक पृथ्वीचोक, पोखरा शाखामा जम्मा गरेको बैंक भौचर पेस गरेपछि	नियमानुसार	तुरुन्त
		बोलपत्र पूर्व बैठक बारे जानकारी	कार्यालयको वेबसाइट <a href="http://phsmc.gandaki.gov.np">phsmc.gandaki.gov.np</a>	निःशुल्क	तुरुन्त



			बाट वा बोलपत्र आव्हान सम्बन्धी सुचना बमोजिम		
		बोलपत्र परीक्षण तथा मुल्याङ्कन बारे जानकारी	कार्यालयको वेबसाइट phsmc.gandaki.gov.np	निःशुल्क	तुरुन्त
		आसय पत्र, बोलपत्र स्वीकृतीको सुचना एवं खरिद सम्भौता बारे जानकारी	बाट		
२	भण्डार, वितरण तथा प्राविधिक सहयोग शाखा	विभिन्न प्रकारका खोप तथा खोप सामग्रीहरूको मापदण्ड बमोजिम भण्डार एवं वितरण	खोप तथा खोप सामग्रीको माग फारम प्राप्त गरेपछि	निःशुल्क	सोहि दिन
		विभिन्न प्रकारका औषधी तथा मेडिकल उपकरणहरूको मापदण्ड बमोजिम भण्डार एवं वितरण	औषधी तथा मेडिकल उपकरणहरूको माग फारम प्राप्त गरेपछि	निःशुल्क	सोहि दिन
		प्राविधिक स्पेसिफिकेशन तयार गर्ने	माग फारम प्राप्त गरेपछि	निःशुल्क	एक हप्ता भित्र
		बायोमेडिकल उपकरणहरूको मर्मत गर्न आवश्यकता अनुसार जाँच-बुझ	मर्मत सम्बन्धी अनुरोध प्राप्त गरेपछि	निःशुल्क	दश दिन भित्र
		बायोमेडिकल उपकरणहरूको आवश्यकता अनुसार मर्मत	स्पेयर पार्ट उपलब्ध भएमा	निःशुल्क	दश दिन भित्र
			स्पेयर पार्ट उपलब्ध नभएमा	नियमानुसार	आवश्यकत I अनुसार
		प्रदेश अन्तर्गतका स्वास्थ्य संस्थाहरूमा आपूर्ति व्यवस्थापन सम्बन्धी अनुगमन	स्वीकृत कार्यतालिका बमोजिम	निःशुल्क	नियमित
३	प्रशासन शाखा	बोलपत्रको भुक्तानी र आर्थिक प्रशासन सम्बन्धी सम्पूर्ण कार्यहरू	सामग्री आपूर्ति भई स्टोर दाखिला प्रतिवेदन र रकम भुक्तानीको लागि सिफारिस प्राप्त भएपछि	नियमानुसार	नियमानुसार
		गुनासो ब्यवस्थापन	कार्यालयको इमेल phsmcgandaki2076@gmail.com बाट वा कार्यालयको सुभाब पेटिका मार्फत	निःशुल्क	नियमानुसार
		सोधपुछ तथा सहायता	कार्यालयको सोधपुछ तथा सहायता कक्षमा सर्पक	निःशुल्क	तुरुन्त

## ७. निर्णय गर्ने प्रक्रिया र अधिकारी:

कामको स्वरूप र प्रकृति अनुसार सम्बन्धित शाखा प्रमुख एवं कार्यालय प्रमुख ।

## ८ . निर्णय उपर उजूरी सुन्ने अधिकारी

डा रोशन न्यौपाने : निर्देशक

## ९. सम्पादन गरेको कामको विवरण

### वैशाख महिना

- Hemodialysis with RO machine खरिदका लागि GH Medhealth, Kathmandu संग खरिद सम्झौता सम्पन्न ।
- कोभिड १९ रोकथाम ,नियन्त्रण तथा उपचारका लागि आवश्यक सामग्री खरिदका लागि Lumbini Health care Limited , Kathmandu ( PCR kits ), Web trading concern, Kathmandu ( VTM ) तथा , PM enterprises, Kathmandu संग खरिद सम्झौता सम्पन्न ।
- नियमित रूपमा कोभिड-१९ विरुद्धको तथा अन्य खोप एवं खोप सामग्रीको आपूर्ति व्यवस्थापन । (अनुसूची १)
- प्रदेश स्थित अस्पताल एवं स्वास्थ्य कार्यालयहरूमा आवश्यक पर्ने Iron folic acid (IFA) tablets खरिदका लागि चिराग फार्मसी, पोखरा संग खरिद सम्झौता सम्पन्न ।
- किशोर किशोरी तथा प्रजनन स्वास्थ्य कार्यक्रम अन्तर्गत परिवार नियोजन सम्बन्धी साधन खरिदका लागि भण्डारी सर्जिकल ,Kathmandu संग सम्झौता सम्पन्न ।
- Condom खरिदका लागि National Biommedical Suppliers, Kathmandu संग खरिद सम्झौता सम्पन्न ।
- प्रदेश स्तरीय कार्यालयहरू, अस्पतालहरू एवं विभिन्न स्थानीय तहहरूमा बायोमेडिकल औजार उपकरण खरिदका लागि specification तथा लागत अनुमान तयार, औजार उपकरण मर्मत सम्भार एवं जडान सम्बन्धी कार्यका लागि प्राविधिक सहयोग प्रदान । (अनुसूची २ )
- विभिन्न जिल्ला स्थित स्वास्थ्य कार्यालय तथा अस्पतालहरूमा स्टोर व्यवस्थापन अनुगमन तथा सुपरिवेक्षणको कार्य सम्पन्न ।(अनुसूची ३ )
- अस्पताल तथा स्वास्थ्य कार्यालयहरूमा अत्यावश्यक औषधि तथा औषधिजन्य सामग्री,, कोभिड १९ सामग्री ,एवं बायोमेडिकल औजार उपकरण वितरण (अनुसूची ४)

### जेष्ठ महिना

- पोखरा स्वास्थ्य विज्ञान प्रतिष्ठानमा Cathlab सेवा सुचारु गर्न आवश्यक उपकरणहरूको Horizon Devices , काठमाण्डौ संग खरिद सम्झौता सम्पन्न ।
- प्रदेश स्थित विभिन्न अस्पतालहरूमा NCU/SNCU सेवा विस्तार तथा सुदृढिकरणका लागि आवश्यक उपकरणहरूको Bhandari Trading Concern संग खरिद सम्झौता सम्पन्न ।
- प्रादेशिक अस्पताल तथा पोखरा स्वास्थ्य विज्ञान प्रतिष्ठानमा डायलासिस सेवा विस्तारका लागि RO प्रविधि सहितको Haemodialysis Machine खरिदका लागि भएको सम्झौता बमोजिम

उपकरणहरू प्राप्त भइ प्राविधिक बाट चेकजाँच कार्य सम्पन्न गरि पोखरा स्वास्थ्य विज्ञान प्रतिष्ठान मा हस्तान्तरण ।

- चिराग फार्मोसि तथा हिमसागर मेडिकल हल संग अत्याश्यक औषधि खरिदका लागि भएको सम्झौता बमोजिम औषधिहरू प्राप्त भइ प्राविधिक चेक जाँच भइ अस्पताल तथा स्वास्थ्य कार्यालयहरूमा वितरण ।
- औषधि तथा औषधिजन्य सामग्री, खोप एवं खोप सामग्री तथा कोभिड १९ सम्बन्धि सामग्रीको नियमित रूपमा आपूर्ति व्यवस्थापन ।
- महामारी तथा विपद व्यवस्थापनका लागि आवश्यक पर्ने सामग्री खरिदका लागि Chirag Pharmacy पोखरा संग भएको सम्झौता बमोजिम सामग्री प्राप्त भइ प्राविधिक चेक जाँच सम्पन्न ।
- कोभिड -१९ सम्बन्धी सामग्री, खरिदका लागि PM Enterprises, Web trading Concern तथा Lumbini Health Care Kathmandu संग भएको सम्झौता बमोजिम सामग्री प्राप्त भइ प्राविधिक चेकजाँच को कार्य सम्पन्न ।
- प्रादेशिक अस्पताल तथा स्वास्थ्य कार्यालयहरूमा आवश्यक पर्ने Iron Folic Acid tablets खरिदका लागि Chirag Pharmacy पोखरा संग भएको सम्झौता बमोजिम औषधि प्राप्त भइ प्राविधिक चेक जाँच पश्चात वितरणको कार्य सम्पन्न ।
- Condom खरिदका लागि National Biomedical Suppliers, Kathmandu संग भएको खरिद सम्झौता बमोजिम सामग्री प्राप्त भइ प्राविधिक चेकजाँच सम्पन्न ।
- माछापुच्छ्रे गाउँपालिका स्थित विभिन्न स्वास्थ्य संस्थामा कार्यारत स्वास्थ्यकर्मी हरूलाई सम्मिलित गराइ आयोजना गरिएको आधारभूत आपूर्ति व्यवस्थापन तालिम कार्यक्रममा प्राविधिक सहजीकरण (अनुसूची ५ )।
- कास्की जिल्ला स्थित विभिन्न स्थानीय तहका Birthing centre हरूमा oxytocin भण्डारण सम्बन्धी मापदण्ड पूरा भए नभएको सुनिश्चितताका लागि अनुगमन तथा सुपरिवेक्षण (अनुसूची ६ )।
- कास्की जिल्ला स्थित सम्पूर्ण स्वास्थ्य संस्थाहरूमा कार्यारत स्वास्थ्यकर्मीहरूलाई आयोजना गरिएको eLMIS तालिममा प्राविधिक सहजीकरण ।
- प्रदेश स्वास्थ्य आपूर्ति व्यवस्थापन केन्द्रमा रहेको Provincial Biomedical Equipments management Unit (Biomedical Workshop ) सुदृढिकरण लागि Nick Simons Institute संग सम्झौता सम्पन्न (अनुसूची ७ )।

## असार महिना

- प्रदेश स्तरीय स्वास्थ्य आपूर्ति शृङ्खला व्यवस्थापन समितिको नियमित बैठक सम्पन्न ।
- NCD सम्बन्धी उपकरण खरिदका लागि Bhandari Trading concern, Kathmandu संग भएको सम्झौता बमोजिम सामग्री प्राप्त भइ प्राविधिक चेकजाँच सम्पन्न ।
- NCU/ SNCU सम्बन्धी उपकरण खरिदका लागि Bhandari Trading concern, Kathmandu संग भएको सम्झौता बमोजिम सामग्री प्राप्त भइ प्राविधिक चेकजाँच सम्पन्न ।
- किशोर किशोरी तथा प्रजनन स्वास्थ्य कार्यक्रम अन्तर्गत परिवार नियोजन सम्बन्धी साधन खरिदका लागि भण्डारी सर्जिकल संग भएको सम्झौता बमोजिम सामग्री प्राप्त भइ प्राविधिक चेक जाँच सम्पन्न ।
- पोखरा स्वास्थ्य विज्ञान प्रतिष्ठानमा Cathlab सेवा सुचारु गर्न आवश्यक उपकरणहरू खरिदका लागि Horizon Devices , काठमाण्डौ संग भएको खरिद सम्झौता बमोजिम सामग्री प्राप्त भइ प्राविधिक चेकजाँच पश्चात हस्तान्तरण ।
- HMIS Tools खरिदका लागि भएको सम्झौता बमोजिम सामग्री प्राप्त भइ विभिन्न जिल्लामा वितरण ।
- विभिन्न जिल्लामा सञ्चालनमा आएको Typhoid तथा कोभिड खोप अभियानको अनुगमन तथा सूपरीवेक्षण ।

## १०. सूचना अधिकारी र कार्यालय प्रमुखको नाम र पद

कार्यालय प्रमुख : डा रोशन न्यौपाने निर्देशक

सूचना अधिकारी : सुस्मिता शर्मा , बरिष्ठ फार्मेसी अधिकृत

## ११. ऐन, नियम तथा निर्देशिकाको सूची

- सार्वजनिक खरिद ऐन २०६३
- सार्वजनिक खरिद नियमावली २०६४
- सार्वजनिक खर्चमा मितव्ययिता र प्रभावकारिता कायम गर्ने सम्बन्धी नीतिगत मार्गदर्शन, २०७५
- सार्वजनिक निकायमा खरिद सम्बन्धी कार्य गर्ने कर्मचारीको योग्यता निर्धारण मापदण्ड २०७८
- प्रदेश स्तरमा संचालन गरिने कार्यक्रमहरूको कार्य संचालन मार्गदर्शन २०७८
- स्थानिय तहमा सञ्चालन गरिने कार्यक्रमहरूको कार्य सञ्चालन मार्गदर्शन २०७८
- औषधि ऐन, २०३५
- राष्ट्रिय औषधि नीति १९९५

- राष्ट्रिय स्वास्थ्य नीति, २०७६

## १२. आम्दानी, खर्च तथा आर्थिक कारोबार सम्बन्धी अघावधिक विवरण

यस केन्द्रको विगत ३ महिनाको आर्थिक कारोबार सम्बन्धी अघावधिक विवरण अनुसूची ८ मा समावेश गरिएको छ ।

## १३. तोकिए बमोजिम अन्य विवरण

(क) कार्यालयको वेबसाइट : <https://phsmc.gandaki.gov.np/>

(ख) कार्यालयको इ-मेल : [phlmcgandaki2076@gmail.com](mailto:phlmcgandaki2076@gmail.com)

(ग) कार्यालयको फोन नं : ०६१-५३६२५४

०६१-५३६२५५

(घ) कार्यालयबाट भए गरेका महत्वपूर्ण गतिविधिहरू कार्यालयको वेबसाइट मार्फत नियमित रूपमा सार्वजनिक गरिएको

अनुसूचो १ कोभिड-१९ विरुद्धको खोप तथा अन्य खोप एवं खोप सामग्री वितरण विवरण

**Total Transaction of COVID Vaccine(Vial) by PHLMC from Baisakh to Asad 2079**

Vaccine (Vials)	COVISHIELD	VEROCELL	PFIZER(A DULT)	PFIZER PEDIATRIC (FIRST CAMPAIGN)	ASTRAZE NECA	MODERNA	JANSS EN
<b>Opening Balance</b>	623	50275	0	0	0	430	0
<b>Received</b>	20100	0	9945	21600	480	9120	1370
<b>Total received by PHLMC</b>	<b>20723</b>	<b>50275</b>	<b>9945</b>	<b>21600</b>	<b>480</b>	<b>9550</b>	<b>1370</b>
<b>Gorkha</b>	2700	600	0	0	0	1080	30
<b>Lamjung</b>	2400	120	0	0	0	960	40
<b>Manang</b>	0	0	0	0	0	0	50
<b>Tanahu</b>	3210	9400	0	0	0	890	50
<b>Kaski</b>	3030	8900	5655	12245	0	1363	630
<b>Syangja</b>	1823	15360	0	0	0	960	80
<b>Parbat</b>	1600	210	0	0	0	600	10
<b>Baglung</b>	1570	0	4290	0	0	1270	30
<b>Myagdi</b>	1600	3000	0	0	0	260	50
<b>Mustang</b>	800	600	0	0	0	0	0
<b>Nawalpur</b>	1800	6000	0	9355	0	260	30
<b>Total distributed</b>	<b>20533</b>	<b>44190</b>	<b>9945</b>	<b>21600</b>	<b>0</b>	<b>7643</b>	<b>1000</b>
<b>Stock on hand</b>	<b>190</b>	<b>6085</b>	<b>0</b>	<b>0</b>	<b>480</b>	<b>1907</b>	<b>370</b>

<b>Total Transaction of Regular Vaccine(Vials) by PHLMC from Baisakh to Asad 2079</b>											
Vaccine	B.C.G.	DPT+HepB+Hib	BOPV	FIPV	PCV	Rota vaccine	Measles+Rubella	Tetanus+Diphtheria	Tetanus+Diphtheria	Japanese Encephalitis	TCV
Opening Balance	2275	1423	5250	3240	12500	4540	4806	2415	1280	4300	65505
Received	9900	3800	3000	5760	3500	53300	7200	5400	14250	8000	14208
Total received	12175	5223	8250	9000	16000	57840	12006	7815	15530	12300	79713
Gorkha	600	400	450	720	1400	1500	650	450	1190	300	0
Lamjung	300	500	350	360	500	1300	500	200	300	300	1008
Manang	0	50	50	0	0	0	0	0	75	0	0
Tanahu	600	550	800	720	1100	600	950	250	1150	600	16464
Kaski	700	700	750	1440	1700	4900	900	550	1600	800	28632
Syangja	600	500	500	360	800	1900	700	250	1300	400	16217
Parbat	500	100	150	360	100	900	350	100	600	200	7496
Baglung	250	250	450	720	500	3900	500	250	1200	500	0
Myagdi	300	300	100	360	600	1200	400	250	650	400	6304
Mustang	0	0	100	0	300	100	100	50	100	0	0
Nawalparasi East	500	600	600	1080	1200	3150	850	350	1350	500	3552
Total distributed	4350	3950	4300	6120	8200	19450	5900	2700	9515	4000	79673
Stock on hand	7825	1273	3950	2880	7800	38390	6106	5115	6015	8300	40

अनुसूची २ : प्रदेश स्तरीय कार्यालहरू, अस्पतालहरू एवं विभिन्न स्थानीय तहहरूमा बायोमेडिकल औजार उपकरण मर्मत सम्भार एवं जडान सम्बन्धी कार्यमा प्राविधिक सहयोग प्रदान



बाग्लुङ स्वास्थ्य कार्यालय स्थित कोल्डरूम मा रहेको Walk nin Cooler संचालनमा रहेको समस्या बारे जानकारी लिँदै



पोखरा स्वास्थ्य विज्ञान प्रतिष्ठानमा प्रदान गरिएको Radiant Warmer जडान पश्चात संचालनमा



धौलागिरी अस्पताल बाग्लुङमा हस्तान्तरण गरिएको Laprascopic Machine संचालनको अवस्थाको बारे जानकारी लिँदै



पर्वत अस्तालमा खरीद गरिएका Equipments हरूको post shipment inspection



अनुसूची ३: विभिन्न जिल्ला स्थित स्वास्थ्य कार्यालय तथा अस्पतालहरूमा स्टोर व्यवस्थापन अनुगमन तथा सुपरिवेक्षण



स्वास्थ्य कार्यालय तनहुँ सुपरिवेक्षण



पर्वत अस्पतालमा बायोमेडिकल उपकरण संचालन बारे सुपरिवेक्षण



स्वास्थ्य कार्यालय पर्वत स्टोर व्यवस्थापन सुपरिवेक्षण



स्वास्थ्य कार्यालय तनहुँ स्टोर व्यवस्थापन सुपरिवेक्षण



प्रदेश सरकार  
स्वास्थ्य तथा जनसंख्या मन्त्रालय  
प्रदेश स्वास्थ्य आपूर्ति व्यवस्थापन केन्द्र  
गण्डकी प्रदेश  
पोखरा, नेपाल

**Commodity Issue Summary**

Province Health Logistic Management Center, Pokhara

From : 2022/04/14 To : 2022/07/16

From : 2079/01/01 To : 2079/03/32

Province : Gandaki Province

District : KASKI

LLG : Pokhara Metropolitan City

PHLMC Name : Province Health Logistic Management Center, Pokhara

S.N.	Issue Type	Commodity Issue No	Commodity Issued Date (AD)	Commodity Issued Date (BS)	Issuing From	Received By	Description	Name	Contact Number	Total Weight [kg]	Transporter	Status
1	Direct Commodity Issue	R4105/78/79/0559	2022/04/15	2079/01/02	[R4105] Province Health Logistic Management Center, Pokhara	[D4800] Health Office Parbat		tanka basel	9847625669	417.62		Released
2	Direct Commodity Issue	R4105/78/79/0560	2022/04/17	2079/01/04	[R4105] Province Health Logistic Management Center, Pokhara	[D5000] Health Office Syangja				12.63		Released
3	Direct Commodity Issue	R4105/78/79/0561	2022/04/17	2079/01/04	[R4105] Province Health Logistic Management Center, Pokhara	[T4301] District Hospital - Manang				0.00		Released
4	Direct Commodity Issue	R4105/78/79/0562	2022/04/17	2079/01/04	[R4105] Province Health Logistic Management Center, Pokhara	[D4300] Health Office Manang				10.50		Released
5	Direct Commodity Issue	R4105/78/79/0563	2022/04/18	2079/01/05	[R4105] Province Health Logistic Management Center, Pokhara	[4105A] Province Health Logistic Management Center, F				0.00		Released
6	Direct Commodity Issue	R4105/78/79/0564	2022/04/18	2079/01/05	[R4105] Province Health Logistic Management Center, Pokhara	[T3801] Gorkha - District Hospital				54.31		Released
7	Direct Commodity Issue	R4105/78/79/0566	2022/04/18	2079/01/05	[R4105] Province Health Logistic Management Center, Pokhara	[N8006] Madhya Bindu District Hospital				7.83		Released
8	Direct Commodity Issue	R4105/78/79/0567	2022/04/18	2079/01/05	[R4105] Province Health Logistic Management Center, Pokhara	[N9708] Province Public Health Laboratory, Gandaki				0.00		Released
9	Direct Commodity Issue	R4105/78/79/0568	2022/04/20	2079/01/07	[R4105] Province Health Logistic Management Center, Pokhara	[D4100] Health Office Kaski		Bhim Psd upadhyaye	9856060355	36.00		Released
10	Direct Commodity Issue	R4105/78/79/0569	2022/04/21	2079/01/08	[R4105] Province Health Logistic Management Center, Pokhara	[D4100] Health Office Kaski				22.96		Released
11	Direct Commodity Issue	R4105/78/79/0570	2022/04/21	2079/01/08	[R4105] Province Health Logistic Management Center, Pokhara	[P5004] Garahun Ghanling (Waling) Primary Health Cen		Narayan Puri	9846121215	257.47		Released
12	Direct Commodity Issue	R4105/78/79/0571	2022/04/22	2079/01/09	[R4105] Province Health Logistic Management Center, Pokhara	[T4301] District Hospital - Manang		kiran		0.00		Released
13	Direct Commodity Issue	R4105/78/79/0572	2022/04/22	2079/01/09	[R4105] Province Health Logistic Management Center, Pokhara	[N3347] Parbat Ayurvedic Ausadhalaya				0.00		Released
14	Direct Commodity Issue	R4105/78/79/0573	2022/04/22	2079/01/09	[R4105] Province Health Logistic Management Center, Pokhara	[T5001] District Hospital - Syangja		Chiranjiwi Khanal		134.30		Released
15	Direct Commodity Issue	R4105/78/79/0574	2022/04/22	2079/01/09	[R4105] Province Health Logistic Management Center, Pokhara	[N8006] Madhya Bindu District Hospital				90.91		Released
16	Direct Commodity Issue	R4105/78/79/0575	2022/04/24	2079/01/11	[R4105] Province Health Logistic Management Center, Pokhara	[N3347] Parbat Ayurvedic Ausadhalaya				55.50		Released

## Province Health Logistic Management Center,Pokhara

From : 2022/04/14 To : 2022/07/16

From : 2079/01/01 To : 2079/03/32

Province : Gandaki Province

District : KASKI

LLG : Pokhara Metropolitan City

PHLMC Name : Province Health Logistic Management Center,Pokhara

S.N.	Issue Type	Commodity Issue No	Commodity Issued Date (AD)	Commodity Issued Date (BS)	Issuing From	Recieved By	Description	Name	Contact Number	Total Weight [kg]	Transporter	Status
17	Direct Commodity Issue	R4105/78/79/0576	2022/04/24	2079/01/11	[R4105] Province Health Logistic Management Center, Pokhara	[N8243] Dhaulagiri Hospital		shanakr puri		0.00		Released
18	Direct Commodity Issue	R4105/78/79/0577	2022/04/24	2079/01/11	[R4105] Province Health Logistic Management Center, Pokhara	[N8550] Health Office Nawalparasi East		shankar puri		32.30		Released
19	Direct Commodity Issue	R4105/78/79/0578	2022/04/24	2079/01/11	[R4105] Province Health Logistic Management Center, Pokhara	[T4401] Mustang District Hospital				28.03		Released
20	Direct Commodity Issue	R4105/78/79/0579	2022/04/24	2079/01/11	[R4105] Province Health Logistic Management Center, Pokhara	[T4401] Mustang District Hospital				5.25		Deleted
21	Direct Commodity Issue	R4105/78/79/0580	2022/04/24	2079/01/11	[R4105] Province Health Logistic Management Center, Pokhara	[T4401] Mustang District Hospital				2.70		Released
22	Direct Commodity Issue	R4105/78/79/0581	2022/04/25	2079/01/12	[R4105] Province Health Logistic Management Center, Pokhara	[N3350] Gorkha Ayurvedic Ausadhalaya		Milan sunar	9856040966	0.00		Released
23	Direct Commodity Issue	R4105/78/79/0582	2022/04/26	2079/01/13	[R4105] Province Health Logistic Management Center, Pokhara	[N8006] Madhya Bindu District Hospital				0.00		Released
24	Direct Commodity Issue	R4105/78/79/0583	2022/04/26	2079/01/13	[R4105] Province Health Logistic Management Center, Pokhara	[N3324] Gandak Ayurvedic Ausadhalaya				0.00		Released
25	Direct Commodity Issue	R4105/78/79/0584	2022/04/26	2079/01/13	[R4105] Province Health Logistic Management Center, Pokhara	[D5100] Health Office Tanahu				0.00		Released
26	Direct Commodity Issue	R4105/78/79/0585	2022/04/26	2079/01/13	[R4105] Province Health Logistic Management Center, Pokhara	[D4800] Health Office Parbat				1.95		Released
27	Direct Commodity Issue	R4105/78/79/0586	2022/04/26	2079/01/13	[R4105] Province Health Logistic Management Center, Pokhara	[N8449] District Hospital, Parbat, Kushma				265.29		Released
28	Direct Commodity Issue	R4105/78/79/0587	2022/04/26	2079/01/13	[R4105] Province Health Logistic Management Center, Pokhara	[D4100] Health Office Kaski				0.00		Released
29	Direct Commodity Issue	R4105/78/79/0588	2022/04/26	2079/01/13	[R4105] Province Health Logistic Management Center, Pokhara	[N8243] Dhaulagiri Hospital				192.86		Released
30	Direct Commodity Issue	R4105/78/79/0589	2022/04/27	2079/01/14	[R4105] Province Health Logistic Management Center, Pokhara	[N8871] Health Directorate Gandaki Province , Province				4.15		Released
31	Direct Commodity Issue	R4105/78/79/0590	2022/04/27	2079/01/14	[R4105] Province Health Logistic Management Center, Pokhara	[T4501] Myagdi District Hospital		Chitra Prasad Parsai	9866665927	373.61		Released
32	Direct Commodity Issue	R4105/78/79/0591	2022/04/27	2079/01/14	[R4105] Province Health Logistic Management Center, Pokhara	[D3800] Health Office Gorkha				0.00		Released
33	Direct Commodity Issue	R4105/78/79/0592	2022/04/27	2079/01/14	[R4105] Province Health Logistic Management Center, Pokhara	[N8550] Health Office Nawalparasi East				0.00		Released
34	Direct Commodity Issue	R4105/78/79/0593	2022/04/27	2079/01/14	[R4105] Province Health Logistic Management Center, Pokhara	[D4800] Health Office Parbat				0.00		Released
35	Direct Commodity Issue	R4105/78/79/0594	2022/04/27	2079/01/14	[R4105] Province Health Logistic Management Center, Pokhara	[D5000] Health Office Syangja				0.00		Released
36	Direct Commodity Issue	R4105/78/79/0595	2022/04/27	2079/01/14	[R4105] Province Health Logistic Management Center, Pokhara	[D3700] Health Office Baglung				0.00		Released
37	Direct Commodity Issue	R4105/78/79/0596	2022/04/27	2079/01/14	[R4105] Province Health Logistic Management Center, Pokhara	[D4200] Health Office Lamjung				0.00		Released
38	Direct Commodity Issue	R4105/78/79/0597	2022/04/27	2079/01/14	[R4105] Province Health Logistic Management Center, Pokhara	[D4500] Health Office Myagdi				0.00		Released
39	Direct Commodity Issue	R4105/78/79/0598	2022/04/27	2079/01/14	[R4105] Province Health Logistic Management Center, Pokhara	[D4300] Health Office Manang				0.00		Released

## Province Health Logistic Management Center,Pokhara

From : 2022/04/14 To : 2022/07/16

From : 2079/01/01 To : 2079/03/32

Province : Gandaki Province

District : KASKI

LLG : Pokhara Metropolitan City

PHLMC Name : Province Health Logistic Management Center,Pokhara

S.N.	Issue Type	Commodity Issue No	Commodity Issued Date (AD)	Commodity Issued Date (BS)	Issuing From	Received By	Description	Name	Contact Number	Total Weight [kg]	Transporter	Status
40	Direct Commodity Issue	R4105/78/79/0599	2022/04/27	2079/01/14	[R4105] Province Health Logistic Management Center, Pokhara	[D4400] Health Office Mustang				0.00		Released
41	Direct Commodity Issue	R4105/78/79/0600	2022/05/02	2079/01/19	[R4105] Province Health Logistic Management Center, Pokhara	[P4101] Bhadabari Primary Health Center		Anil Thapa	9846264350	0.00		Released
42	Direct Commodity Issue	R4105/78/79/0601	2022/05/02	2079/01/19	[R4105] Province Health Logistic Management Center, Pokhara	[N8243] Dhaulagiri Hospital		SHiva jhalak	9857632731	0.00		Released
43	Direct Commodity Issue	R4105/78/79/0602	2022/05/03	2079/01/20	[R4105] Province Health Logistic Management Center, Pokhara	[N8550] Health Office Nawalparasi East				451.14		Released
44	Direct Commodity Issue	R4105/78/79/0603	2022/05/03	2079/01/20	[R4105] Province Health Logistic Management Center, Pokhara	[N8006] Madhya Bindu District Hospital				537.23		Released
45	Direct Commodity Issue	R4105/78/79/0604	2022/05/03	2079/01/20	[R4105] Province Health Logistic Management Center, Pokhara	[T5101] Damauli District Hospital				470.80		Released
46	Direct Commodity Issue	R4105/78/79/0605	2022/05/03	2079/01/20	[R4105] Province Health Logistic Management Center, Pokhara	[N8550] Health Office Nawalparasi East				0.00		Released
47	Direct Commodity Issue	R4105/78/79/0606	2022/05/05	2079/01/22	[R4105] Province Health Logistic Management Center, Pokhara	[T4201] Lamjung District Community Hospital				465.01		Released
48	Direct Commodity Issue	R4105/78/79/0607	2022/05/05	2079/01/22	[R4105] Province Health Logistic Management Center, Pokhara	[D4300] Health Office Manang				153.00		Released
49	Direct Commodity Issue	R4105/78/79/0608	2022/05/05	2079/01/22	[R4105] Province Health Logistic Management Center, Pokhara	[N3351] Manang Ayurvedic Ausadhalaya				0.00		Released
50	Direct Commodity Issue	R4105/78/79/0609	2022/05/06	2079/01/23	[R4105] Province Health Logistic Management Center, Pokhara	[T4201] Lamjung District Community Hospital				0.00		Released
51	Direct Commodity Issue	R4105/78/79/0610	2022/05/06	2079/01/23	[R4105] Province Health Logistic Management Center, Pokhara	[D4800] Health Office Parbat				2.30		Released
52	Direct Commodity Issue	R4105/78/79/0611	2022/05/08	2079/01/25	[R4105] Province Health Logistic Management Center, Pokhara	[N8241] Western Regional Hospital		kshitiz gurun	9806605695	9.19		Released
53	Direct Commodity Issue	R4105/78/79/0612	2022/05/08	2079/01/25	[R4105] Province Health Logistic Management Center, Pokhara	[T4201] Lamjung District Community Hospital				0.00		Released
54	Direct Commodity Issue	R4105/78/79/0613	2022/05/08	2079/01/25	[R4105] Province Health Logistic Management Center, Pokhara	[D4200] Health Office Lamjung				0.00		Released
55	Direct Commodity Issue	R4105/78/79/0614	2022/05/08	2079/01/25	[R4105] Province Health Logistic Management Center, Pokhara	[N8241] Western Regional Hospital				6.72		Released
56	Direct Commodity Issue	R4105/78/79/0615	2022/05/08	2079/01/25	[R4105] Province Health Logistic Management Center, Pokhara	[N8006] Madhya Bindu District Hospital				0.00		Released
57	Direct Commodity Issue	R4105/78/79/0616	2022/05/08	2079/01/25	[R4105] Province Health Logistic Management Center, Pokhara	[T5101] Damauli District Hospital				0.00		Released
58	Direct Commodity Issue	R4105/78/79/0617	2022/05/17	2079/02/03	[R4105] Province Health Logistic Management Center, Pokhara	[T5101] Damauli District Hospital		Rohit Darai	9806591724	6.00		Released
59	Direct Commodity Issue	R4105/78/79/0618	2022/05/18	2079/02/04	[R4105] Province Health Logistic Management Center, Pokhara	[N9708] Province Public Health Laboratory, Gandaki				0.00		Released
60	Direct Commodity Issue	R4105/78/79/0619	2022/05/18	2079/02/04	[R4105] Province Health Logistic Management Center, Pokhara	[T4401] Mustang District Hospital				62.96		Released
61	Direct Commodity Issue	R4105/78/79/0620	2022/05/18	2079/02/04	[R4105] Province Health Logistic Management Center, Pokhara	[N9995] Infectious and Communicable Disease Hospital		subhadra dulal		0.00		Released
62	Direct Commodity Issue	R4105/78/79/0621	2022/05/18	2079/02/04	[R4105] Province Health Logistic Management Center, Pokhara	[D3800] Health Office Gorkha				745.20		Released

## Province Health Logistic Management Center,Pokhara

From : 2022/04/14 To : 2022/07/16

From : 2079/01/01 To : 2079/03/32

Province : Gandaki Province

District : KASKI

LLG : Pokhara Metropolitan City

PHLMC Name : Province Health Logistic Management Center,Pokhara

S.N.	Issue Type	Commodity Issue No	Commodity Issued Date (AD)	Commodity Issued Date (BS)	Issuing From	Received By	Description	Name	Contact Number	Total Weight [kg]	Transporter	Status
63	Direct Commodity Issue	R4105/78/79/0622	2022/05/18	2079/02/04	[R4105] Province Health Logistic Management Center, Pokhara	[T3801] Gorkha - District Hospital				477.32		Released
64	Direct Commodity Issue	R4105/78/79/0623	2022/05/18	2079/02/04	[R4105] Province Health Logistic Management Center, Pokhara	[D5100] Health Office Tanahu				105.00		Released
65	Direct Commodity Issue	R4105/78/79/0624	2022/05/20	2079/02/06	[R4105] Province Health Logistic Management Center, Pokhara	[D3700] Health Office Baglung				6.58		Released
66	Direct Commodity Issue	R4105/78/79/0625	2022/05/20	2079/02/06	[R4105] Province Health Logistic Management Center, Pokhara	[N8006] Madhya Bindu District Hospital				35.94		Released
67	Direct Commodity Issue	R4105/78/79/0626	2022/05/20	2079/02/06	[R4105] Province Health Logistic Management Center, Pokhara	[N8449] District Hospital, Parbat, Kushma				65.20		Released
68	Direct Commodity Issue	R4105/78/79/0627	2022/05/20	2079/02/06	[R4105] Province Health Logistic Management Center, Pokhara	[N8449] District Hospital, Parbat, Kushma				0.00		Released
69	Direct Commodity Issue	R4105/78/79/0628	2022/05/23	2079/02/09	[R4105] Province Health Logistic Management Center, Pokhara	[T5001] District Hospital - Syangja				737.49		Released
70	Direct Commodity Issue	R4105/78/79/0629	2022/05/23	2079/02/09	[R4105] Province Health Logistic Management Center, Pokhara	[T5001] District Hospital - Syangja				0.00		Released
71	Direct Commodity Issue	R4105/78/79/0630	2022/05/23	2079/02/09	[R4105] Province Health Logistic Management Center, Pokhara	[N9785] Office of the Chief Minister & Council of Ministers		vagiram oli		10.50		Released
72	Direct Commodity Issue	R4105/78/79/0631	2022/05/24	2079/02/10	[R4105] Province Health Logistic Management Center, Pokhara	[T4501] Myagdi District Hospital		jharana baniya		28.86		Released
73	Direct Commodity Issue	R4105/78/79/0632	2022/05/25	2079/02/11	[R4105] Province Health Logistic Management Center, Pokhara	[N8449] District Hospital, Parbat, Kushma				7.63		Released
74	Direct Commodity Issue	R4105/78/79/0633	2022/05/25	2079/02/11	[R4105] Province Health Logistic Management Center, Pokhara	[D3700] Health Office Baglung		Kamala Thapa		2.87		Released
75	Direct Commodity Issue	R4105/78/79/0634	2022/05/25	2079/02/11	[R4105] Province Health Logistic Management Center, Pokhara	[T4501] Myagdi District Hospital				1,206.89		Released
76	Direct Commodity Issue	R4105/78/79/0635	2022/05/26	2079/02/12	[R4105] Province Health Logistic Management Center, Pokhara	[S4133] Hemja Health Post				31.50		Released
77	Direct Commodity Issue	R4105/78/79/0636	2022/05/26	2079/02/12	[R4105] Province Health Logistic Management Center, Pokhara	[8968] Western Regional and Health Training Center				17.88		Released
78	Direct Commodity Issue	R4105/78/79/0637	2022/05/26	2079/02/12	[R4105] Province Health Logistic Management Center, Pokhara	[8876A] Family Welfare Division				0.00		Reversed
79	Direct Commodity Issue	R4105/78/79/0638	2022/05/26	2079/02/12	[R4105] Province Health Logistic Management Center, Pokhara	[X2304-C] Family Planning and Essential Drugs - CW Te				0.00		Released
80	Direct Commodity Issue	R4105/78/79/0639	2022/05/27	2079/02/13	[R4105] Province Health Logistic Management Center, Pokhara	[T5101] Damauli District Hospital		Rohit Darai	9806591724	595.73		Released
81	Direct Commodity Issue	R4105/78/79/0640	2022/05/27	2079/02/13	[R4105] Province Health Logistic Management Center, Pokhara	[D5000] Health Office Syangja		shankar puri		17,796.36		Released
82	Direct Commodity Issue	R4105/78/79/0641	2022/05/30	2079/02/16	[R4105] Province Health Logistic Management Center, Pokhara	[N8449] District Hospital, Parbat, Kushma		Shankar Puri		12,529.36		Reversed
83	Direct Commodity Issue	R4105/78/79/0642	2022/05/31	2079/02/17	[R4105] Province Health Logistic Management Center, Pokhara	[D4800] Health Office Parbat		Shankar puri		13,093.40		Reversed
84	Direct Commodity Issue	R4105/78/79/0643	2022/05/31	2079/02/17	[R4105] Province Health Logistic Management Center, Pokhara	[D4100] Health Office Kaski		Bhim Psd Upadhyaye	9856060355	27.07		Released
85	Direct Commodity Issue	R4105/78/79/0644	2022/06/01	2079/02/18	[R4105] Province Health Logistic Management Center, Pokhara	[N8241] Western Regional Hospital		Nirmaya Gurung	9846260766	104.16		Released

## Province Health Logistic Management Center,Pokhara

From : 2022/04/14 To : 2022/07/16

From : 2079/01/01 To : 2079/03/32

Province : Gandaki Province

District : KASKI

LLG : Pokhara Metropolitan City

PHLMC Name : Province Health Logistic Management Center,Pokhara

S.N.	Issue Type	Commodity Issue No	Commodity Issued Date (AD)	Commodity Issued Date (BS)	Issuing From	Recieved By	Description	Name	Contact Number	Total Weight [kg]	Transporter	Status
86	Direct Commodity Issue	R4105/78/79/0645	2022/06/01	2079/02/18	[R4105] Province Health Logistic Management Center, Pokhara	[D3800] Health Office Gorkha				1.34		Released
87	Direct Commodity Issue	R4105/78/79/0646	2022/06/01	2079/02/18	[R4105] Province Health Logistic Management Center, Pokhara	[N8449] District Hospital, Parbat, Kushma				12,529.36		Released
88	Direct Commodity Issue	R4105/78/79/0647	2022/05/30	2079/02/16	[R4105] Province Health Logistic Management Center, Pokhara	[D4200] Health Office Lamjung		Chandra lama	9846593415	96.52		Released
89	Direct Commodity Issue	R4105/78/79/0648	2022/06/02	2079/02/19	[R4105] Province Health Logistic Management Center, Pokhara	[D4400] Health Office Mustang				1,816.54		Released
90	Direct Commodity Issue	R4105/78/79/0649	2022/06/02	2079/02/19	[R4105] Province Health Logistic Management Center, Pokhara	[N9995] Infectious and Communicable Disease Hospital		Ramchandra Pokhrel	9846060044	165.04		Released
91	Direct Commodity Issue	R4105/78/79/0650	2022/06/02	2079/02/19	[R4105] Province Health Logistic Management Center, Pokhara	[T4401] Mustang District Hospital				1,222.48		Released
92	Direct Commodity Issue	R4105/78/79/0651	2022/06/02	2079/02/19	[R4105] Province Health Logistic Management Center, Pokhara	[N9992] Hariyokharka Hoapital INF		Bintos pariyar	9806592178	5.71		Released
93	Direct Commodity Issue	R4105/78/79/0652	2022/06/02	2079/02/19	[R4105] Province Health Logistic Management Center, Pokhara	[8968] Western Regional and Health Training Center		Bhojraj Gautam	9846032990	0.00		Released
94	Direct Commodity Issue	R4105/78/79/0653	2022/06/02	2079/02/19	[R4105] Province Health Logistic Management Center, Pokhara	[D4300] Health Office Manang				21.87		Released
95	Direct Commodity Issue	R4105/78/79/0654	2022/06/02	2079/02/19	[R4105] Province Health Logistic Management Center, Pokhara	[N3352] Mustang Ayurvedic Ausadhalaya				0.00		Released
96	Direct Commodity Issue	R4105/78/79/0655	2022/06/03	2079/02/20	[R4105] Province Health Logistic Management Center, Pokhara	[N8550] Health Office Nawalparasi East		Sitaram Shrestha		27.16		Released
97	Direct Commodity Issue	R4105/78/79/0656	2022/06/03	2079/02/20	[R4105] Province Health Logistic Management Center, Pokhara	[D5100] Health Office Tanahu		Rajendra Ranabhat	9846054716	6.89		Released
98	Direct Commodity Issue	R4105/78/79/0657	2022/06/03	2079/02/20	[R4105] Province Health Logistic Management Center, Pokhara	[D5100] Health Office Tanahu		Rajendra Ranabhat	9846054716	1.51		Released
99	Direct Commodity Issue	R4105/78/79/0658	2022/06/03	2079/02/20	[R4105] Province Health Logistic Management Center, Pokhara	[T5001] District Hospital - Syangja		Indra thapa	9846072048	256.41		Released
100	Direct Commodity Issue	R4105/78/79/0659	2022/06/03	2079/02/20	[R4105] Province Health Logistic Management Center, Pokhara	[N8006] Madhya Bindu District Hospital		bishnu prsd pkhrel	9860553432	303.05		Released
101	Direct Commodity Issue	R4105/78/79/0660	2022/06/03	2079/02/20	[R4105] Province Health Logistic Management Center, Pokhara	[N8449] District Hospital, Parbat, Kushma		pra bane	9847704522	201.25		Released
102	Direct Commodity Issue	R4105/78/79/0661	2022/06/06	2079/02/23	[R4105] Province Health Logistic Management Center, Pokhara	[L0423] Bhimad Municipality, Tanahun				100.00		Released
103	Direct Commodity Issue	R4105/78/79/0662	2022/06/06	2079/02/23	[R4105] Province Health Logistic Management Center, Pokhara	[D4100] Health Office Kaski				2,706.63		Released
104	Direct Commodity Issue	R4105/78/79/0663	2022/06/07	2079/02/24	[R4105] Province Health Logistic Management Center, Pokhara	[T5001] District Hospital - Syangja				580.25		Released
105	Direct Commodity Issue	R4105/78/79/0664	2022/06/08	2079/02/25	[R4105] Province Health Logistic Management Center, Pokhara	[D4800] Health Office Parbat		Sankar Puri		13,093.40		Released
106	Direct Commodity Issue	R4105/78/79/0665	2022/06/08	2079/02/25	[R4105] Province Health Logistic Management Center, Pokhara	[D4800] Health Office Parbat				5.74		Released
107	Direct Commodity Issue	R4105/78/79/0666	2022/06/08	2079/02/25	[R4105] Province Health Logistic Management Center, Pokhara	[T5004] Chapakot Hospital		Dipak Pariyar	9825129127	250.08		Released
108	Direct Commodity Issue	R4105/78/79/0667	2022/06/08	2079/02/25	[R4105] Province Health Logistic Management Center, Pokhara	[T4401] Mustang District Hospital		Bhojraj Regmi	9847023496	33.90		Released

## Province Health Logistic Management Center,Pokhara

From : 2022/04/14 To : 2022/07/16

From : 2079/01/01 To : 2079/03/32

Province : Gandaki Province

District : KASKI

LLG : Pokhara Metropolitan City

PHLMC Name : Province Health Logistic Management Center,Pokhara

S.N.	Issue Type	Commodity Issue No	Commodity Issued Date (AD)	Commodity Issued Date (BS)	Issuing From	Recieved By	Description	Name	Contact Number	Total Weight [kg]	Transporter	Status
109	Direct Commodity Issue	R4105/78/79/0668	2022/06/08	2079/02/25	[R4105] Province Health Logistic Management Center, Pokhara	[N8449] District Hospital, Parbat, Kushma				3.65		Released
110	Direct Commodity Issue	R4105/78/79/0669	2022/06/08	2079/02/25	[R4105] Province Health Logistic Management Center, Pokhara	[N9796] G.P. Koirala Hospital		Sabin dangi	9841696821	123.60		Released
111	Direct Commodity Issue	R4105/78/79/0670	2022/06/08	2079/02/25	[R4105] Province Health Logistic Management Center, Pokhara	[N8243] Dhaulagiri Hospital				3.15		Released
112	Direct Commodity Issue	R4105/78/79/0671	2022/06/08	2079/02/25	[R4105] Province Health Logistic Management Center, Pokhara	[T4501] Myagdi District Hospital				4.79		Released
113	Direct Commodity Issue	R4105/78/79/0672	2022/06/08	2079/02/25	[R4105] Province Health Logistic Management Center, Pokhara	[T3801] Gorkha - District Hospital				3.70		Released
114	Direct Commodity Issue	R4105/78/79/0673	2022/06/08	2079/02/25	[R4105] Province Health Logistic Management Center, Pokhara	[T4201] Lamjung District Community Hospital	STI Drug distribution			3.33		Released
115	Direct Commodity Issue	R4105/78/79/0674	2022/06/08	2079/02/25	[R4105] Province Health Logistic Management Center, Pokhara	[P5004] Garahun Ghanling (Waling) Primary Health Cen	STI drug Distribution			3.28		Released
116	Direct Commodity Issue	R4105/78/79/0675	2022/06/08	2079/02/25	[R4105] Province Health Logistic Management Center, Pokhara	[T4201] Lamjung District Community Hospital		bhawan ale	9841561574	340.38		Released
117	Direct Commodity Issue	R4105/78/79/0676	2022/06/08	2079/02/25	[R4105] Province Health Logistic Management Center, Pokhara	[T5001] District Hospital - Syangja				2.99		Released
118	Direct Commodity Issue	R4105/78/79/0677	2022/06/08	2079/02/25	[R4105] Province Health Logistic Management Center, Pokhara	[T5101] Damauli District Hospital				4.09		Released
119	Direct Commodity Issue	R4105/78/79/0678	2022/06/08	2079/02/25	[R4105] Province Health Logistic Management Center, Pokhara	[P4602] Chormara Primary Health Center				1.75		Draft
120	Direct Commodity Issue	R4105/78/79/0679	2022/06/08	2079/02/25	[R4105] Province Health Logistic Management Center, Pokhara	[T4301] District Hospital - Manang				0.82		Draft
121	Direct Commodity Issue	R4105/78/79/0680	2022/06/08	2079/02/25	[R4105] Province Health Logistic Management Center, Pokhara	[T4401] Mustang District Hospital				0.00		Released
122	Direct Commodity Issue	R4105/78/79/0681	2022/06/09	2079/02/26	[R4105] Province Health Logistic Management Center, Pokhara	[L0423] Bhimad Municipality, Tanahun		Manuraj Baral	9856056434	7.79		Released
123	Direct Commodity Issue	R4105/78/79/0682	2022/06/13	2079/02/30	[R4105] Province Health Logistic Management Center, Pokhara	[D4800] Health Office Parbat				0.01		Released
124	Direct Commodity Issue	R4105/78/79/0683	2022/06/13	2079/02/30	[R4105] Province Health Logistic Management Center, Pokhara	[S5045] Aruchaur Health Post		SOMSING MAGAR		225.90		Released
125	Direct Commodity Issue	R4105/78/79/0684	2022/06/13	2079/02/30	[R4105] Province Health Logistic Management Center, Pokhara	[T5001] District Hospital - Syangja				11,803.81		Released
126	Direct Commodity Issue	R4105/78/79/0685	2022/06/14	2079/02/31	[R4105] Province Health Logistic Management Center, Pokhara	[D4200] Health Office Lamjung				13,693.47		Released
127	Direct Commodity Issue	R4105/78/79/0686	2022/06/14	2079/02/31	[R4105] Province Health Logistic Management Center, Pokhara	[T4201] Lamjung District Community Hospital				8,027.46		Released
128	Direct Commodity Issue	R4105/78/79/0687	2022/06/14	2079/02/31	[R4105] Province Health Logistic Management Center, Pokhara	[D5000] Health Office Syangja				2.27		Released
129	Direct Commodity Issue	R4105/78/79/0688	2022/06/19	2079/03/05	[R4105] Province Health Logistic Management Center, Pokhara	[D4100] Health Office Kaski		anita Gautam		5.74		Released
130	Direct Commodity Issue	R4105/78/79/0689	2022/06/19	2079/03/05	[R4105] Province Health Logistic Management Center, Pokhara	[D4800] Health Office Parbat				1.72		Released
131	Direct Commodity Issue	R4105/78/79/0690	2022/06/19	2079/03/05	[R4105] Province Health Logistic Management Center, Pokhara	[N8550] Health Office Nawalparasi East				14,906.79		Released

## Province Health Logistic Management Center,Pokhara

From : 2022/04/14 To : 2022/07/16

From : 2079/01/01 To : 2079/03/32

Province : Gandaki Province

District : KASKI

LLG : Pokhara Metropolitan City

PHLMC Name : Province Health Logistic Management Center,Pokhara

S.N.	Issue Type	Commodity Issue No	Commodity Issued Date (AD)	Commodity Issued Date (BS)	Issuing From	Recieved By	Description	Name	Contact Number	Total Weight [kg]	Transporter	Status
132	Direct Commodity Issue	R4105/78/79/0691	2022/06/19	2079/03/05	[R4105] Province Health Logistic Management Center, Pokhara	[T5001] District Hospital - Syangja		INDRA THAPA	9846072248	402.50		Released
133	Direct Commodity Issue	R4105/78/79/0692	2022/06/20	2079/03/06	[R4105] Province Health Logistic Management Center, Pokhara	[T4201] Lamjung District Community Hospital				20.33		Released
134	Direct Commodity Issue	R4105/78/79/0693	2022/06/20	2079/03/06	[R4105] Province Health Logistic Management Center, Pokhara	[T4501] Myagdi District Hospital				41.12		Released
135	Direct Commodity Issue	R4105/78/79/0694	2022/06/20	2079/03/06	[R4105] Province Health Logistic Management Center, Pokhara	[N8449] District Hospital, Parbat, Kushma				20.33		Released
136	Direct Commodity Issue	R4105/78/79/0695	2022/06/20	2079/03/06	[R4105] Province Health Logistic Management Center, Pokhara	[D4200] Health Office Lamjung		Humnath poudel		281.05		Released
137	Direct Commodity Issue	R4105/78/79/0696	2022/06/20	2079/03/06	[R4105] Province Health Logistic Management Center, Pokhara	[N9796] G.P. Koirala Hospital				471.22		Released
138	Direct Commodity Issue	R4105/78/79/0697	2022/06/21	2079/03/07	[R4105] Province Health Logistic Management Center, Pokhara	[D3800] Health Office Gorkha		Nanibabu Dani		179.98		Released
139	Direct Commodity Issue	R4105/78/79/0698	2022/06/21	2079/03/07	[R4105] Province Health Logistic Management Center, Pokhara	[D3700] Health Office Baglung				3,222.58		Released
140	Direct Commodity Issue	R4105/78/79/0699	2022/06/21	2079/03/07	[R4105] Province Health Logistic Management Center, Pokhara	[D4100] Health Office Kaski				11,884.96		Released
141	Direct Commodity Issue	R4105/78/79/0700	2022/06/21	2079/03/07	[R4105] Province Health Logistic Management Center, Pokhara	[D4100] Health Office Kaski		Bhim Psd Poudel		84.87		Released
142	Direct Commodity Issue	R4105/78/79/0701	2022/06/21	2079/03/07	[R4105] Province Health Logistic Management Center, Pokhara	[L0432] Pokhara Metropolitan City, Kaski		Ganga prasad acharya		0.00		Released
143	Direct Commodity Issue	R4105/78/79/0702	2022/06/22	2079/03/08	[R4105] Province Health Logistic Management Center, Pokhara	[N8241] Western Regional Hospital				25.42		Released
144	Direct Commodity Issue	R4105/78/79/0703	2022/06/23	2079/03/09	[R4105] Province Health Logistic Management Center, Pokhara	[T4501] Myagdi District Hospital				1,348.27		Released
145	Direct Commodity Issue	R4105/78/79/0704	2022/06/23	2079/03/09	[R4105] Province Health Logistic Management Center, Pokhara	[D4500] Health Office Myagdi				1,148.52		Released
146	Direct Commodity Issue	R4105/78/79/0705	2022/06/23	2079/03/09	[R4105] Province Health Logistic Management Center, Pokhara	[N8241] Western Regional Hospital		maya darji	9815109089	0.86		Released
147	Direct Commodity Issue	R4105/78/79/0706	2022/06/23	2079/03/09	[R4105] Province Health Logistic Management Center, Pokhara	[D4200] Health Office Lamjung				447.60		Released
148	Direct Commodity Issue	R4105/78/79/0707	2022/06/23	2079/03/09	[R4105] Province Health Logistic Management Center, Pokhara	[T4301] District Hospital - Manang				195.81		Released
149	Direct Commodity Issue	R4105/78/79/0708	2022/06/27	2079/03/13	[R4105] Province Health Logistic Management Center, Pokhara	[D3800] Health Office Gorkha		Milan	9856040966	213.48		Released
150	Direct Commodity Issue	R4105/78/79/0709	2022/06/27	2079/03/13	[R4105] Province Health Logistic Management Center, Pokhara	[D4500] Health Office Myagdi				2.30		Released
151	Direct Commodity Issue	R4105/78/79/0710	2022/06/27	2079/03/13	[R4105] Province Health Logistic Management Center, Pokhara	[N8243] Dhaulagiri Hospital				26,155.88		Released
152	Direct Commodity Issue	R4105/78/79/0711	2022/06/28	2079/03/14	[R4105] Province Health Logistic Management Center, Pokhara	[N8546] Pokhara Academy of Health Science				24,800.00		Released
153	Direct Commodity Issue	R4105/78/79/0712	2022/06/29	2079/03/15	[R4105] Province Health Logistic Management Center, Pokhara	[D4800] Health Office Parbat				0.00		Released
154	Direct Commodity Issue	R4105/78/79/0713	2022/06/29	2079/03/15	[R4105] Province Health Logistic Management Center, Pokhara	[D3800] Health Office Gorkha				25,404.46		Released



## Province Health Logistic Management Center,Pokhara

From : 2022/04/14 To : 2022/07/16

From : 2079/01/01 To : 2079/03/32

Province : Gandaki Province

District : KASKI

LLG : Pokhara Metropolitan City

PHLMC Name : Province Health Logistic Management Center,Pokhara

S.N.	Issue Type	Commodity Issue No	Commodity Issued Date (AD)	Commodity Issued Date (BS)	Issuing From	Recieved By	Description	Name	Contact Number	Total Weight [kg]	Transporter	Status
155	Direct Commodity Issue	R4105/78/79/0714	2022/06/30	2079/03/16	[R4105] Province Health Logistic Management Center, Pokhara	[N8550] Health Office Nawalparasi East		Tikaram shrestha		9.18		Released
156	Direct Commodity Issue	R4105/78/79/0715	2022/07/01	2079/03/17	[R4105] Province Health Logistic Management Center, Pokhara	[N8243] Dhaulagiri Hospital				0.16		Released
157	Direct Commodity Issue	R4105/78/79/0716	2022/07/01	2079/03/17	[R4105] Province Health Logistic Management Center, Pokhara	[T3801] Gorkha - District Hospital				263.04		Released
158	Direct Commodity Issue	R4105/78/79/0717	2022/07/01	2079/03/17	[R4105] Province Health Logistic Management Center, Pokhara	[N8449] District Hospital, Parbat, Kushma		Anil sapkota	9867156829	604.79		Released
159	Direct Commodity Issue	R4105/78/79/0718	2022/07/01	2079/03/17	[R4105] Province Health Logistic Management Center, Pokhara	[D4200] Health Office Lamjung		Bhawan Ale		88.28		Released
160	Direct Commodity Issue	R4105/78/79/0719	2022/07/03	2079/03/19	[R4105] Province Health Logistic Management Center, Pokhara	[D4800] Health Office Parbat				2.30		Released
161	Direct Commodity Issue	R4105/78/79/0720	2022/07/03	2079/03/19	[R4105] Province Health Logistic Management Center, Pokhara	[N8007] Tuberculosis Treatment Center, Pokhara		Narendra Prakash Paudel	9846063114	1.50		Released
162	Direct Commodity Issue	R4105/78/79/0721	2022/07/04	2079/03/20	[R4105] Province Health Logistic Management Center, Pokhara	[N8241] Western Regional Hospital				427.50		Reversed
163	Direct Commodity Issue	R4105/78/79/0722	2022/07/04	2079/03/20	[R4105] Province Health Logistic Management Center, Pokhara	[N8241] Western Regional Hospital				427.50		Released
164	Direct Commodity Issue	R4105/78/79/0723	2022/07/06	2079/03/22	[R4105] Province Health Logistic Management Center, Pokhara	[T3801] Gorkha - District Hospital				1.15		Released
165	Direct Commodity Issue	R4105/78/79/0724	2022/07/06	2079/03/22	[R4105] Province Health Logistic Management Center, Pokhara	[T3801] Gorkha - District Hospital				0.00		Released
166	Direct Commodity Issue	R4105/78/79/0725	2022/07/06	2079/03/22	[R4105] Province Health Logistic Management Center, Pokhara	[T4201] Lamjung District Community Hospital		kanya prasad sunar		1.15		Released
167	Direct Commodity Issue	R4105/78/79/0726	2022/07/08	2079/03/24	[R4105] Province Health Logistic Management Center, Pokhara	[L0425] Shuklagandaki Municipality, Tanahun				90.00		Released
168	Direct Commodity Issue	R4105/78/79/0727	2022/07/08	2079/03/24	[R4105] Province Health Logistic Management Center, Pokhara	[L0429] Devghat Rural Municipality, Tanahun				50.00		Released
169	Direct Commodity Issue	R4105/78/79/0728	2022/07/08	2079/03/24	[R4105] Province Health Logistic Management Center, Pokhara	[L0481] Gaidakot Municipality, Nawalpur				50.00		Released
170	Direct Commodity Issue	R4105/78/79/0729	2022/07/08	2079/03/24	[R4105] Province Health Logistic Management Center, Pokhara	[L0446] Kushma Municipality, Parbat				100.00		Released
171	Direct Commodity Issue	R4105/78/79/0730	2022/07/08	2079/03/24	[R4105] Province Health Logistic Management Center, Pokhara	[N8449] District Hospital, Parbat, Kushma				100.00		Released
172	Direct Commodity Issue	R4105/78/79/0731	2022/07/08	2079/03/24	[R4105] Province Health Logistic Management Center, Pokhara	[D4800] Health Office Parbat				250.00		Released
173	Direct Commodity Issue	R4105/78/79/0732	2022/07/08	2079/03/24	[R4105] Province Health Logistic Management Center, Pokhara	[L0447] Phalebas Municipality, Parbat				100.00		Released
174	Direct Commodity Issue	R4105/78/79/0733	2022/07/08	2079/03/24	[R4105] Province Health Logistic Management Center, Pokhara	[L0466] Dhaulagiri Rural Municipality, Myagdi				50.00		Released
175	Direct Commodity Issue	R4105/78/79/0734	2022/07/08	2079/03/24	[R4105] Province Health Logistic Management Center, Pokhara	[L0468] Malika Rural Municipality, Myagdi				50.00		Released
176	Direct Commodity Issue	R4105/78/79/0735	2022/07/08	2079/03/24	[R4105] Province Health Logistic Management Center, Pokhara	[L0469] Raghuganga Rural Municipality, Myagdi				50.00		Released
177	Direct Commodity Issue	R4105/78/79/0736	2022/07/08	2079/03/24	[R4105] Province Health Logistic Management Center, Pokhara	[L0467] Mangala Rural Municipality, Myagdi				50.00		Released

## Province Health Logistic Management Center,Pokhara

From : 2022/04/14 To : 2022/07/16

From : 2079/01/01 To : 2079/03/32

Province : Gandaki Province

District : KASKI

LLG : Pokhara Metropolitan City

PHLMC Name : Province Health Logistic Management Center,Pokhara

S.N.	Issue Type	Commodity Issue No	Commodity Issued Date (AD)	Commodity Issued Date (BS)	Issuing From	Recieved By	Description	Name	Contact Number	Total Weight [kg]	Transporter	Status
178	Direct Commodity Issue	R4105/78/79/0737	2022/07/08	2079/03/24	[R4105] Province Health Logistic Management Center, Pokhara	[L0433] Annapurna Rural Municipality, Kaski				50.00		Released
179	Direct Commodity Issue	R4105/78/79/0738	2022/07/08	2079/03/24	[R4105] Province Health Logistic Management Center, Pokhara	[N9289] Matrisisu Miteri Hospital				150.00		Released
180	Direct Commodity Issue	R4105/78/79/0739	2022/07/08	2079/03/24	[R4105] Province Health Logistic Management Center, Pokhara	[L0460] Kaligandaki Rural Municipality, Syangja				50.00		Released
181	Direct Commodity Issue	R4105/78/79/0740	2022/07/08	2079/03/24	[R4105] Province Health Logistic Management Center, Pokhara	[L0457] Walling Municipality, Syangja				150.00		Released
182	Direct Commodity Issue	R4105/78/79/0741	2022/07/08	2079/03/24	[R4105] Province Health Logistic Management Center, Pokhara	[L0456] Bhirkot Municipality, Syangja				100.00		Released
183	Direct Commodity Issue	R4105/78/79/0742	2022/07/08	2079/03/24	[R4105] Province Health Logistic Management Center, Pokhara	[L0458] Arjun Choupari Rural Municipality, Syangja				50.00		Released
184	Direct Commodity Issue	R4105/78/79/0743	2022/07/08	2079/03/24	[R4105] Province Health Logistic Management Center, Pokhara	[D5000] Health Office Syangja				250.00		Released
185	Direct Commodity Issue	R4105/78/79/0744	2022/07/08	2079/03/24	[R4105] Province Health Logistic Management Center, Pokhara	[N9289] Matrisisu Miteri Hospital		Narayan Prasad Adhikari	9846532955	268.09		Released
186	Direct Commodity Issue	R4105/78/79/0745	2022/07/08	2079/03/24	[R4105] Province Health Logistic Management Center, Pokhara	[D5000] Health Office Syangja				5.74		Released
187	Direct Commodity Issue	R4105/78/79/0746	2022/07/08	2079/03/24	[R4105] Province Health Logistic Management Center, Pokhara	[D5100] Health Office Tanahu				5.74		Released
188	Direct Commodity Issue	R4105/78/79/0747	2022/07/08	2079/03/24	[R4105] Province Health Logistic Management Center, Pokhara	[N8550] Health Office Nawalparasi East				22.96		Released
189	Direct Commodity Issue	R4105/78/79/0748	2022/07/08	2079/03/24	[R4105] Province Health Logistic Management Center, Pokhara	[D4200] Health Office Lamjung				22.96		Released
190	Direct Commodity Issue	R4105/78/79/0749	2022/07/08	2079/03/24	[R4105] Province Health Logistic Management Center, Pokhara	[D3700] Health Office Baglung				0.00		Released
191	Direct Commodity Issue	R4105/78/79/0750	2022/07/11	2079/03/27	[R4105] Province Health Logistic Management Center, Pokhara	[N9708] Province Public Health Laboratory, Gandaki				10.79		Released
192	Direct Commodity Issue	R4105/78/79/0751	2022/07/11	2079/03/27	[R4105] Province Health Logistic Management Center, Pokhara	[N8006] Madhya Bindu District Hospital				0.00		Released
193	Direct Commodity Issue	R4105/78/79/0752	2022/07/11	2079/03/27	[R4105] Province Health Logistic Management Center, Pokhara	[N8006] Madhya Bindu District Hospital		Bishnu Prasad Pokhrel		419.30		Released
194	Direct Commodity Issue	R4105/78/79/0753	2022/07/11	2079/03/27	[R4105] Province Health Logistic Management Center, Pokhara	[N8241] Western Regional Hospital				0.00		Released
195	Direct Commodity Issue	R4105/78/79/0754	2022/07/11	2079/03/27	[R4105] Province Health Logistic Management Center, Pokhara	[N8546] Pokhara Academy of Health Science		Shiva Psd Ghimire		50.00		Released
196	Direct Commodity Issue	R4105/78/79/0755	2022/07/11	2079/03/27	[R4105] Province Health Logistic Management Center, Pokhara	[N8546] Pokhara Academy of Health Science		Nirmaya Pun		45.00		Released
197	Direct Commodity Issue	R4105/78/79/0756	2022/07/11	2079/03/27	[R4105] Province Health Logistic Management Center, Pokhara	[L0461] Phedikhola Rural Municipality, Syangja				50.00		Released
198	Direct Commodity Issue	R4105/78/79/0757	2022/07/11	2079/03/27	[R4105] Province Health Logistic Management Center, Pokhara	[T5001] District Hospital - Syangja				100.00		Released
199	Direct Commodity Issue	R4105/78/79/0758	2022/07/11	2079/03/27	[R4105] Province Health Logistic Management Center, Pokhara	[L0455] Putalibazar Municipality, Syangja				150.00		Released
200	Direct Commodity Issue	R4105/78/79/0759	2022/07/11	2079/03/27	[R4105] Province Health Logistic Management Center, Pokhara	[L0454] Chapakot Municipality, Syangja				100.00		Released

## Province Health Logistic Management Center,Pokhara

From : 2022/04/14 To : 2022/07/16

From : 2079/01/01 To : 2079/03/32

Province : Gandaki Province

District : KASKI

LLG : Pokhara Metropolitan City

PHLMC Name : Province Health Logistic Management Center,Pokhara

S.N.	Issue Type	Commodity Issue No	Commodity Issued Date (AD)	Commodity Issued Date (BS)	Issuing From	Recieved By	Description	Name	Contact Number	Total Weight [kg]	Transporter	Status
201	Direct Commodity Issue	R4105/78/79/0760	2022/07/11	2079/03/27	[R4105] Province Health Logistic Management Center, Pokhara	[L0453] Galyang Municipality, Syangja				100.00		Released
202	Direct Commodity Issue	R4105/78/79/0761	2022/07/11	2079/03/27	[R4105] Province Health Logistic Management Center, Pokhara	[L0434] Machhapuchchhre Rural Municipality, Kaski				50.00		Released
203	Direct Commodity Issue	R4105/78/79/0762	2022/07/11	2079/03/27	[R4105] Province Health Logistic Management Center, Pokhara	[L0421] Marshyangdi Rural Municipality, Lamjung				50.00		Released
204	Direct Commodity Issue	R4105/78/79/0763	2022/07/11	2079/03/27	[R4105] Province Health Logistic Management Center, Pokhara	[L0418] Kwhola Sothar Rural Municipality, Lamjung				50.00		Released
205	Direct Commodity Issue	R4105/78/79/0764	2022/07/11	2079/03/27	[R4105] Province Health Logistic Management Center, Pokhara	[L0416] Rainas Municipality, Lamjung				100.00		Released
206	Direct Commodity Issue	R4105/78/79/0765	2022/07/11	2079/03/27	[R4105] Province Health Logistic Management Center, Pokhara	[N8006] Madhya Bindu District Hospital				61.31		Released
207	Direct Commodity Issue	R4105/78/79/0766	2022/07/11	2079/03/27	[R4105] Province Health Logistic Management Center, Pokhara	[L0422] Bhanu Municipality, Tanahun				100.00		Released
208	Direct Commodity Issue	R4105/78/79/0767	2022/07/11	2079/03/27	[R4105] Province Health Logistic Management Center, Pokhara	[L0417] Sundarbazar Municipality, Lamjung				150.00		Released
209	Direct Commodity Issue	R4105/78/79/0768	2022/07/11	2079/03/27	[R4105] Province Health Logistic Management Center, Pokhara	[L0404] Palungtar Municipality, Gorkha				100.00		Released
210	Direct Commodity Issue	R4105/78/79/0769	2022/07/11	2079/03/27	[R4105] Province Health Logistic Management Center, Pokhara	[L0414] Bensi Shahar Municipality, Lamjung				150.00		Released
211	Direct Commodity Issue	R4105/78/79/0770	2022/07/11	2079/03/27	[R4105] Province Health Logistic Management Center, Pokhara	[N9289] Matrisisu Miteri Hospital		Narayan Psd Adhikari		7.23		Released
212	Direct Commodity Issue	R4105/78/79/0771	2022/07/11	2079/03/27	[R4105] Province Health Logistic Management Center, Pokhara	[N8550] Health Office Nawalparasi East				6.00		Released
213	Direct Commodity Issue	R4105/78/79/0772	2022/07/11	2079/03/27	[R4105] Province Health Logistic Management Center, Pokhara	[T4501] Myagdi District Hospital		mina subedi		13.15		Released
214	Direct Commodity Issue	R4105/78/79/0773	2022/07/11	2079/03/27	[R4105] Province Health Logistic Management Center, Pokhara	[D4200] Health Office Lamjung				250.00		Released
215	Direct Commodity Issue	R4105/78/79/0774	2022/07/11	2079/03/27	[R4105] Province Health Logistic Management Center, Pokhara	[D4500] Health Office Myagdi				16.43		Released
216	Direct Commodity Issue	R4105/78/79/0775	2022/07/11	2079/03/27	[R4105] Province Health Logistic Management Center, Pokhara	[T4201] Lamjung District Community Hospital				100.00		Released
217	Direct Commodity Issue	R4105/78/79/0776	2022/07/11	2079/03/27	[R4105] Province Health Logistic Management Center, Pokhara	[L0425] Shuklagandaki Municipality, Tanahun				150.00		Released
218	Direct Commodity Issue	R4105/78/79/0777	2022/07/11	2079/03/27	[R4105] Province Health Logistic Management Center, Pokhara	[L0423] Bhimad Municipality, Tanahun				100.00		Released
219	Direct Commodity Issue	R4105/78/79/0778	2022/07/11	2079/03/27	[R4105] Province Health Logistic Management Center, Pokhara	[L0431] Myagde Rural Municipality, Tanahun				50.00		Released
220	Direct Commodity Issue	R4105/78/79/0779	2022/07/11	2079/03/27	[R4105] Province Health Logistic Management Center, Pokhara	[L0424] Byas Municipality, Tanahun				150.00		Released
221	Direct Commodity Issue	R4105/78/79/0780	2022/07/11	2079/03/27	[R4105] Province Health Logistic Management Center, Pokhara	[T5101] Damauli District Hospital				100.00		Released
222	Direct Commodity Issue	R4105/78/79/0781	2022/07/11	2079/03/27	[R4105] Province Health Logistic Management Center, Pokhara	[D5100] Health Office Tanahu				250.00		Released
223	Direct Commodity Issue	R4105/78/79/0782	2022/07/11	2079/03/27	[R4105] Province Health Logistic Management Center, Pokhara	[L0430] Bandipur Rural Municipality, Tanahun				50.00		Released

## Province Health Logistic Management Center,Pokhara

From : 2022/04/14 To : 2022/07/16

From : 2079/01/01 To : 2079/03/32

Province : Gandaki Province

District : KASKI

LLG : Pokhara Metropolitan City

PHLMC Name : Province Health Logistic Management Center,Pokhara

S.N.	Issue Type	Commodity Issue No	Commodity Issued Date (AD)	Commodity Issued Date (BS)	Issuing From	Recieved By	Description	Name	Contact Number	Total Weight [kg]	Transporter	Status
224	Direct Commodity Issue	R4105/78/79/0783	2022/07/11	2079/03/27	[R4105] Province Health Logistic Management Center, Pokhara	[L0415] Madhya Nepal Municipality, Lamjung				100.00		Released
225	Direct Commodity Issue	R4105/78/79/0784	2022/07/12	2079/03/28	[R4105] Province Health Logistic Management Center, Pokhara	[D5100] Health Office Tanahu				24,298.21		Released
226	Direct Commodity Issue	R4105/78/79/0785	2022/07/12	2079/03/28	[R4105] Province Health Logistic Management Center, Pokhara	[L0436] Rupa Rural Municipality, Kaski				50.00		Released
227	Direct Commodity Issue	R4105/78/79/0786	2022/07/12	2079/03/28	[R4105] Province Health Logistic Management Center, Pokhara	[D3800] Health Office Gorkha				250.00		Released
228	Direct Commodity Issue	R4105/78/79/0787	2022/07/12	2079/03/28	[R4105] Province Health Logistic Management Center, Pokhara	[L0403] Gorkha Municipality, Gorkha				150.00		Released
229	Direct Commodity Issue	R4105/78/79/0788	2022/07/12	2079/03/28	[R4105] Province Health Logistic Management Center, Pokhara	[L0405] Ajirkot Rural Municipality, Gorkha				50.00		Released
230	Direct Commodity Issue	R4105/78/79/0789	2022/07/12	2079/03/28	[R4105] Province Health Logistic Management Center, Pokhara	[T3801] Gorkha - District Hospital				100.00		Released
231	Direct Commodity Issue	R4105/78/79/0790	2022/07/12	2079/03/28	[R4105] Province Health Logistic Management Center, Pokhara	[L0412] Siranchowk Rural Municipality, Gorkha				50.00		Released
232	Direct Commodity Issue	R4105/78/79/0791	2022/07/12	2079/03/28	[R4105] Province Health Logistic Management Center, Pokhara	[L0410] Bhimsen Rural Municipality, Gorkha				50.00		Released
233	Direct Commodity Issue	R4105/78/79/0792	2022/07/12	2079/03/28	[R4105] Province Health Logistic Management Center, Pokhara	[L0411] Shahid Lakhan Rural Municipality, Gorkha				50.00		Released
234	Direct Commodity Issue	R4105/78/79/0793	2022/07/12	2079/03/28	[R4105] Province Health Logistic Management Center, Pokhara	[L0480] Kawasoti Municipality, Nawalpur				150.00		Released
235	Direct Commodity Issue	R4105/78/79/0794	2022/07/12	2079/03/28	[R4105] Province Health Logistic Management Center, Pokhara	[L0483] Madhya Bindu Municipality, Nawalpur				100.00		Released
236	Direct Commodity Issue	R4105/78/79/0795	2022/07/12	2079/03/28	[R4105] Province Health Logistic Management Center, Pokhara	[L0482] Devchuli Municipality, Nawalpur				100.00		Released
237	Direct Commodity Issue	R4105/78/79/0796	2022/07/12	2079/03/28	[R4105] Province Health Logistic Management Center, Pokhara	[N8006] Madhya Bindu District Hospital				100.00		Released
238	Direct Commodity Issue	R4105/78/79/0797	2022/07/12	2079/03/28	[R4105] Province Health Logistic Management Center, Pokhara	[L0475] Tamankhola Rural Municipality, Baglung				50.00		Released
239	Direct Commodity Issue	R4105/78/79/0798	2022/07/12	2079/03/28	[R4105] Province Health Logistic Management Center, Pokhara	[L0472] Dhorpatan Municipality, Baglung				50.00		Released
240	Direct Commodity Issue	R4105/78/79/0799	2022/07/12	2079/03/28	[R4105] Province Health Logistic Management Center, Pokhara	[L0470] Galkot Municipality, Baglung				50.00		Released
241	Direct Commodity Issue	R4105/78/79/0800	2022/07/12	2079/03/28	[R4105] Province Health Logistic Management Center, Pokhara	[N8243] Dhaulagiri Hospital				250.00		Released
242	Direct Commodity Issue	R4105/78/79/0801	2022/07/12	2079/03/28	[R4105] Province Health Logistic Management Center, Pokhara	[L0464] Beni Municipality, Myagdi				25.00		Released
243	Direct Commodity Issue	R4105/78/79/0802	2022/07/12	2079/03/28	[R4105] Province Health Logistic Management Center, Pokhara	[L0451] Modi Rural Municipality, Parbat				50.00		Released
244	Direct Commodity Issue	R4105/78/79/0803	2022/07/12	2079/03/28	[R4105] Province Health Logistic Management Center, Pokhara	[D4500] Health Office Myagdi				250.00		Released
245	Direct Commodity Issue	R4105/78/79/0804	2022/07/12	2079/03/28	[R4105] Province Health Logistic Management Center, Pokhara	[T4501] Myagdi District Hospital				100.00		Released
246	Direct Commodity Issue	R4105/78/79/0805	2022/07/12	2079/03/28	[R4105] Province Health Logistic Management Center, Pokhara	[L0448] Jaljala Rural Municipality, Parbat				50.00		Released

## Province Health Logistic Management Center,Pokhara

From : 2022/04/14 To : 2022/07/16

From : 2079/01/01 To : 2079/03/32

Province : Gandaki Province

District : KASKI

LLG : Pokhara Metropolitan City

PHLMC Name : Province Health Logistic Management Center,Pokhara

S.N.	Issue Type	Commodity Issue No	Commodity Issued Date (AD)	Commodity Issued Date (BS)	Issuing From	Received By	Description	Name	Contact Number	Total Weight [kg]	Transporter	Status
247	Direct Commodity Issue	R4105/78/79/0806	2022/07/12	2079/03/28	[R4105] Province Health Logistic Management Center, Pokhara	[L0473] Baglung Municipality, Baglung				200.00		Released
248	Direct Commodity Issue	R4105/78/79/0807	2022/07/12	2079/03/28	[R4105] Province Health Logistic Management Center, Pokhara	[D3700] Health Office Baglung				250.00		Released
249	Direct Commodity Issue	R4105/78/79/0808	2022/07/12	2079/03/28	[R4105] Province Health Logistic Management Center, Pokhara	[L0474] Kathekhola Rural Municipality, Baglung				50.00		Released
250	Direct Commodity Issue	R4105/78/79/0809	2022/07/12	2079/03/28	[R4105] Province Health Logistic Management Center, Pokhara	[L0471] Jaimuni Municipality, Baglung				50.00		Released
251	Direct Commodity Issue	R4105/78/79/0810	2022/07/12	2079/03/28	[R4105] Province Health Logistic Management Center, Pokhara	[N8243] Dhaulagiri Hospital				0.00		Reversed
252	Direct Commodity Issue	R4105/78/79/0811	2022/07/12	2079/03/28	[R4105] Province Health Logistic Management Center, Pokhara	[D3700] Health Office Baglung				0.00		Released
253	Direct Commodity Issue	R4105/78/79/0812	2022/07/14	2079/03/30	[R4105] Province Health Logistic Management Center, Pokhara	[D4500] Health Office Myagdi				5.76		Released
254	Direct Commodity Issue	R4105/78/79/0813	2022/07/15	2079/03/31	[R4105] Province Health Logistic Management Center, Pokhara	[T4501] Myagdi District Hospital		Mina Subedi		0.77		Released
255	Direct Commodity Issue	R4105/78/79/0814	2022/07/15	2079/03/31	[R4105] Province Health Logistic Management Center, Pokhara	[D4500] Health Office Myagdi				0.77		Released
256	Direct Commodity Issue	R4105/78/79/0815	2022/07/15	2079/03/31	[R4105] Province Health Logistic Management Center, Pokhara	[N8550] Health Office Nawalparasi East				27.84		Released
257	Direct Commodity Issue	R4105/78/79/0816	2022/07/15	2079/03/31	[R4105] Province Health Logistic Management Center, Pokhara	[D4100] Health Office Kaski		Anita Gautam		0.00		Released
258	Direct Commodity Issue	R4105/78/79/0817	2022/07/14	2079/03/30	[R4105] Province Health Logistic Management Center, Pokhara	[N3330] Baglung Ayurveda Ausadhalaya				0.00		Released
259	Direct Commodity Issue	R4105/78/79/0818	2022/07/15	2079/03/31	[R4105] Province Health Logistic Management Center, Pokhara	[N8006] Madhya Bindu District Hospital				54.88		Released
260	Direct Commodity Issue	R4105/78/79/0819	2022/07/15	2079/03/31	[R4105] Province Health Logistic Management Center, Pokhara	[D4100] Health Office Kaski		Anita Gautam		0.00		Released
261	Direct Commodity Issue	R4105/78/79/0820	2022/07/15	2079/03/31	[R4105] Province Health Logistic Management Center, Pokhara	[N8871] Health Directorate Gandaki Province , Province				16.88		Reversed
262	Direct Commodity Issue	R4105/78/79/0821	2022/07/15	2079/03/31	[R4105] Province Health Logistic Management Center, Pokhara	[N8871] Health Directorate Gandaki Province , Province				30.00		Released
263	Direct Commodity Issue	R4105/78/79/0822	2022/07/15	2079/03/31	[R4105] Province Health Logistic Management Center, Pokhara	[N8449] District Hospital, Parbat, Kushma		Bishal Giri		482.59		Released
264	Direct Commodity Issue	R4105/78/79/0823	2022/07/15	2079/03/31	[R4105] Province Health Logistic Management Center, Pokhara	[N8449] District Hospital, Parbat, Kushma				0.60		Released
265	Direct Commodity Issue	R4105/78/79/0824	2022/07/15	2079/03/31	[R4105] Province Health Logistic Management Center, Pokhara	[T4401] Mustang District Hospital				54.00		Released
266	Direct Commodity Issue	R4105/78/79/0825	2022/07/15	2079/03/31	[R4105] Province Health Logistic Management Center, Pokhara	[N8871] Health Directorate Gandaki Province , Province				27.40		Released
267	Direct Commodity Issue	R4105/78/79/0826	2022/07/15	2079/03/31	[R4105] Province Health Logistic Management Center, Pokhara	[T3801] Gorkha - District Hospital				0.39		Released
268	Direct Commodity Issue	R4105/78/79/0827	2022/07/15	2079/03/31	[R4105] Province Health Logistic Management Center, Pokhara	[N8243] Dhaulagiri Hospital				0.97		Released
269	Direct Commodity Issue	R4105/78/79/0828	2022/07/15	2079/03/31	[R4105] Province Health Logistic Management Center, Pokhara	[N9796] G.P. Koirala Hospital				0.39		Released

## Province Health Logistic Management Center,Pokhara

From : 2022/04/14 To : 2022/07/16

From : 2079/01/01 To : 2079/03/32

Province : Gandaki Province

District : KASKI

LLG : Pokhara Metropolitan City

PHLMC Name : Province Health Logistic Management Center,Pokhara

S.N.	Issue Type	Commodity Issue No	Commodity Issued Date (AD)	Commodity Issued Date (BS)	Issuing From	Received By	Description	Name	Contact Number	Total Weight [kg]	Transporter	Status
270	Direct Commodity Issue	R4105/78/79/0829	2022/07/15	2079/03/31	[R4105] Province Health Logistic Management Center, Pokhara	[T4501] Myagdi District Hospital				13.92		Released
271	Direct Commodity Issue	R4105/78/79/0830	2022/07/15	2079/03/31	[R4105] Province Health Logistic Management Center, Pokhara	[T4301] District Hospital - Manang				1.86		Released
272	Direct Commodity Issue	R4105/78/79/0831	2022/07/15	2079/03/31	[R4105] Province Health Logistic Management Center, Pokhara	[D4200] Health Office Lamjung				281.77		Reversed
273	Direct Commodity Issue	R4105/78/79/0832	2022/07/15	2079/03/31	[R4105] Province Health Logistic Management Center, Pokhara	[D4200] Health Office Lamjung				0.71		Released
274	Direct Commodity Issue	R4105/78/79/0833	2022/07/15	2079/03/31	[R4105] Province Health Logistic Management Center, Pokhara	[D4800] Health Office Parbat				0.01		Released
275	Direct Commodity Issue	R4105/78/79/0834	2022/07/15	2079/03/31	[R4105] Province Health Logistic Management Center, Pokhara	[N8871] Health Directorate Gandaki Province , Province				1.94		Released
276	Direct Commodity Issue	R4105/78/79/0835	2022/07/15	2079/03/31	[R4105] Province Health Logistic Management Center, Pokhara	[L0436] Rupa Rural Municipality, Kaski		Manisha shrestha		0.00		Released
277	Direct Commodity Issue	R4105/78/79/0836	2022/07/15	2079/03/31	[R4105] Province Health Logistic Management Center, Pokhara	[N9289] Matrisisu Miteri Hospital				0.00		Released
278	Direct Commodity Issue	R4105/78/79/0837	2022/07/15	2079/03/31	[R4105] Province Health Logistic Management Center, Pokhara	[D4400] Health Office Mustang		Bir bdr Ghale		16.00		Released
279	Direct Commodity Issue	R4105/78/79/0838	2022/07/15	2079/03/31	[R4105] Province Health Logistic Management Center, Pokhara	[T4501] Myagdi District Hospital		chitra Prasai		12.28		Released
280	Direct Commodity Issue	R4105/78/79/0839	2022/07/15	2079/03/31	[R4105] Province Health Logistic Management Center, Pokhara	[N8006] Madhya Bindu District Hospital		Shankar Puri		12,832.70		Released
281	Direct Commodity Issue	R4105/78/79/0840	2022/07/15	2079/03/31	[R4105] Province Health Logistic Management Center, Pokhara	[N8550] Health Office Nawalparasi East				24,255.80		Released
282	Direct Commodity Issue	R4105/78/79/0841	2022/07/15	2079/03/31	[R4105] Province Health Logistic Management Center, Pokhara	[T5101] Damauli District Hospital				20.33		Released
283	Direct Commodity Issue	R4105/78/79/0842	2022/07/15	2079/03/31	[R4105] Province Health Logistic Management Center, Pokhara	[N8550] Health Office Nawalparasi East				0.00		Reversed
284	Direct Commodity Issue	R4105/78/79/0843	2022/07/15	2079/03/31	[R4105] Province Health Logistic Management Center, Pokhara	[N8550] Health Office Nawalparasi East				0.00		Released
285	Direct Commodity Issue	R4105/78/79/0844	2022/07/15	2079/03/31	[R4105] Province Health Logistic Management Center, Pokhara	[D5100] Health Office Tanahu				0.00		Released
286	Direct Commodity Issue	R4105/78/79/0845	2022/07/15	2079/03/31	[R4105] Province Health Logistic Management Center, Pokhara	[T4401] Mustang District Hospital				42.81		Released
287	Direct Commodity Issue	R4105/78/79/0846	2022/07/15	2079/03/31	[R4105] Province Health Logistic Management Center, Pokhara	[D3700] Health Office Baglung				0.00		Released
288	Direct Commodity Issue	R4105/78/79/0847	2022/07/15	2079/03/31	[R4105] Province Health Logistic Management Center, Pokhara	[N8241] Western Regional Hospital				8.12		Released
289	Direct Commodity Issue	R4105/78/79/0848	2022/07/15	2079/03/31	[R4105] Province Health Logistic Management Center, Pokhara	[T4501] Myagdi District Hospital				41.12		Released
290	Direct Commodity Issue	R4105/78/79/0849	2022/07/15	2079/03/31	[R4105] Province Health Logistic Management Center, Pokhara	[D4100] Health Office Kaski				12,407.14		Released
291	Direct Commodity Issue	R4105/78/79/0850	2022/07/15	2079/03/31	[R4105] Province Health Logistic Management Center, Pokhara	[D5100] Health Office Tanahu				46.65		Released
292	Direct Commodity Issue	R4105/78/79/0851	2022/07/15	2079/03/31	[R4105] Province Health Logistic Management Center, Pokhara	[S4133] Hemja Health Post				77.22		Released



अनुसूची ५ माछापुच्छ्रे गाउँपालिका स्थित आधारभूत आपूर्ति व्यवस्थापन तालिम कार्यक्रममा प्राविधिक सहजीकरण





अनुसूची ६: Birthing centre हरमा oxytocin भण्डारण सम्बन्धी मापदण्ड पूरा भए नभएको सुनिश्चितताका लागि अनुगमन तथा सुपरिवेक्षण



अनुसूची ७ Provincial Biomedical Equipments management Unit (Biomedical Workshop ) सुदृढिकरण लागि Nick Simons Institute  
सँग सम्झौता



प्रदेश सरकार

स्वास्थ्य तथा जनसंख्या मन्त्रालय

प्रदेश स्वास्थ्य आपूर्ति व्यवस्थापन केन्द्र

आर्थिक वर्ष २०७८/७९ को वार्षिक बजेट समिक्षासँग सम्बन्धित विवरण

क. बजेट उपशीर्षकगत वित्तीय प्रगति (धप/घट भएको बजेटसहित)

रकम रु. हजारमा

क्र. सं.	बजेट उपशीर्षक	चालु			पुजिगत			जम्मा		
		विनियोजन	खर्च	खर्च प्रतिशत	विनियोजन	खर्च	खर्च प्रतिशत	विनियोजन	खर्च	खर्च प्रतिशत
१	३५५९९९२३४	-	-		४०००	३०२०	७५.५	-	-	-
२	३५५९९९२८३	१९९९२	१९०६२.९	९५.३५	-					
३	३५५०५००१३	६०४२४	४२९५५.६	७१.०३	-					
४	३५५९९९२२३	४२२८	३३८९	८०	-					
५	३५५०५००१४	-	-		५७०००	२०९९०	३६.३			
६	३५५९९९२९३	६३०	२३५.४	३७.३७	-					
७	३५५९९९२३३	५९४७३	३८५९५.७	६४.७५	-					
८	३५५९९९२५३	७७४०	७३३९.९	९४.७२	-					
९	३५५९९९२०४	-	-		५०००	-	-			
१०	३५५९९९२४३	२०८००	१४९३७.९	७१.८९	-					

ख. स्रोतगत वित्तीय प्रगति (धप/घट भएको बजेटसहित)

क्र.सं.	स्रोत	चालु			पुजिगत			जम्मा		
		विनियोजन	खर्च	खर्च प्रतिशत	विनियोजन	खर्च	खर्च प्रतिशत	विनियोजन	खर्च	खर्च प्रतिशत
१	प्रदेश	५८४२४	४२०५३.६	७२	२७०००	२०९९०	७७.४	८५४२४	६२९६३	७२.७
२	समानिकरण अनुदान									
३	सशर्त अनुदान	९९२८६३	८३४६२.४	७३.९	९०००	३०२०	३३.५	१२९८६३	८६४८२	७०.९
४	विशेष अनुदान	२०००	९९४	४९.७	३००००	०	०	३२०००	९९४	०.०३
५	समपुरक अनुदान									
	जम्मा	१७३२८७	१२६५९०	७३	६६०००	२३९३०	३६	२३९२८७	१४९६३९	६२.५



